

Admission to

# Primary School

# 2021



**Apply online at [www.halton.gov.uk/schooladmissions](http://www.halton.gov.uk/schooladmissions)**

**Closing date for Primary School Applications:**  
**15<sup>th</sup> January 2021**

People Directorate  
Halton Borough Council  
Rutland House  
Halton Lea  
Runcorn  
WA7 2GW  
Tel: 0303 333 4300

Dear Parent/Carer,

This booklet produced by Halton Borough Council sets out the arrangements for the admission of children in to reception class for the academic year beginning in September 2021.

The booklet contains important information, which you should read carefully before making the important decision of expressing a preference for a school (or schools) for your children to attend. I hope you will find it helpful and informative. It is also beneficial to visit the school(s) you are interested in before submitting your application.

This booklet can only give a brief outline of policy and procedures. If you need further information, please do not hesitate to contact individual schools or the School Admissions on 0151 511 7338/ 511 7271. This booklet is available online at [www.halton.gov.uk/schooladmissions](http://www.halton.gov.uk/schooladmissions) and if you follow the links you will also find our online preference form which allows you to complete and return your preferences electronically.

As parents/carers it is important you are aware that the success of a preference you express for a school will depend on the particular criteria that are explained in the booklet. You should note that **you cannot simply choose a school.**

Starting school for the first time, or transferring from one school to another, is an important step for parents and children. I hope this booklet, and seeking further advice if necessary, will help you and your child/children to look on the experience with confidence. Staff in all of our schools look forward to working with you in support of your child/children and their learning, as we know that those children who succeed best at school receive understanding and support from their home.

It is important that you complete and submit a preference form before the closing date of **15<sup>th</sup> January 2021**, as a late application will normally only be considered after the main allocation of places has taken place and may result in you not obtaining a place at your school of preference.

On behalf of Councillor McInerney, Portfolio Holder for the People Directorate, and myself, I would like to take this opportunity to wish your child/children a successful and happy career at school.

**Milorad Vasic**  
**Strategic Director, People Directorate**

Note: The information contained in this guide was correct at the time of preparation (July 2020) but could alter in the light of Government legislation and local policy developments.

## CONTENTS

<b><u>Admission to Reception Class in Halton Schools</u></b>	<b>4</b>
<b><u>Frequently Asked Questions</u></b>	<b>5</b>
<b><u>Timetable for Admissions to Primary Schools</u></b>	<b>6</b>
<b><u>Admission to School</u></b>	<b>7</b>
 <b><u>Allocation of Places to Halton Primary Schools</u></b>	 <b>9</b>
Oversubscription Criteria for Community, Academy, Voluntary Controlled and Voluntary Aided Schools in Halton	
 <b><u>Online Applications</u></b>	 <b>11</b>
Applying for a School Place online	
Completing the Online Preference form	
 <b><u>Additional Admissions Information</u></b>	 <b>12</b>
Waiting Lists	
Equal Preferences	
Late Applications	
Place of residence	
Change of Preferences	
Change of Address	
Deferred Entry to School	
Withdrawal of an offer of School Place	
 <b><u>Primary Schools in Halton</u></b>	 <b>15</b>
Community and Voluntary Controlled Primary Schools	
Voluntary Aided Church of England Primary Schools	
Voluntary Aided Catholic Primary Schools	
Academy Schools	
 <b><u>Map of Primary School provision in Halton</u></b>	 <b>47</b>
Widnes	
Runcorn	
 <b><u>Other Information</u></b>	 <b>49</b>
Admission Appeals Procedure	
How to Appeal	
In-Year Admissions and Fair Access Protocol	
Travel Assistance	
Provision of Free School Meals	
Special Educational Needs	
Useful Contact Information	

## ADMISSION TO RECEPTION CLASS IN HALTON SCHOOLS

### How to apply for a Halton Primary School reception class place for September 2021

Halton Local Authority (LA) has an agreed co-ordinated scheme for admission to a primary school in September 2021.

This means that when you complete the **online preference form** or a paper copy (available on the website or by request), you may put any primary school regardless of which LA it is in, but please consider carefully whether your child will meet the admissions criteria. Once you have submitted the preference form to Halton LA, consideration to your preferences will be given, and if your preference is for a school in another LA then Halton LA will forward details on to the relevant LA. The preference form is for completion by Halton residents only. Parents/Carers of pupils from other LAs should complete their own LA form, but may include Halton schools as preferences on their form.

**The closing date for receipt of preference forms via online applications and those submitted by a paper copy is 15<sup>th</sup> January 2021**

**Complete a preference form online at:** [www.halton.gov.uk/schooladmissions](http://www.halton.gov.uk/schooladmissions)

Applications for all schools are considered in strict accordance with the relevant admissions criteria and it is important that you read and consider the admissions criteria contained within this booklet before submitting your application.

**If you complete a paper form and are able to return it by email, please email it to [schooladmissions@halton.gov.uk](mailto:schooladmissions@halton.gov.uk) or post it directly to:**

School Admissions Team  
PO Box 317  
Runcorn  
Cheshire  
WA7 9BZ

**\*As receipts cannot be issued for paper copies of the preference form received via postal services, it is strongly recommended that you send the form by a recorded delivery service.**

To ensure your application is received and processed, forms **must not** be returned anywhere other than to the above sources. **DO NOT** return your form to a school.

## FREQUENTLY ASKED QUESTIONS

### What is an admission policy?

An admission policy is used to decide which children will have priority for places but only if the school receives more applications than the number of places available. The Council has agreed one admission policy for all community, academy and voluntary controlled schools in Halton. Voluntary Aided schools each set their own individual policy agreed and set by the governing body of the school. Admission policies contain the “oversubscription criteria” which will be applied to assess each application.

### What is a Published Admission Number (PAN)?

This is the number of places available in the reception class. Once the PAN has been reached, the admissions body cannot admit any more pupils.

### Are there limits to infant class sizes?

By law, no infant class should normally have more than 30 pupils with one teacher. This applies to all Halton schools. Head teachers are responsible for ensuring that classes are organised to comply with this requirement and this is monitored by the local authority.

### Can I complete and submit the form online?

Yes, we highly recommend that you complete the preference form online at:

**[www.halton.gov.uk/schooladmissions](http://www.halton.gov.uk/schooladmissions)**

Changes to preferences, home address and other details can be made online, and forms can be edited and re-submitted online up to the published deadline date of the 15<sup>th</sup> January 2021. **The online facility is not available after this point.**

An **email receipt** of your application will be sent to the registered email address used in this process immediately after you have submitted your application. **Please check your junk mail/spam folder if you do not receive this confirmation email.**

### What happens if I send the preference form in after the published deadline?

Applications received after the published deadline of the 15<sup>th</sup> January 2021 for all Halton schools will be **treated as a late application** and will not be considered until **after** the main allocation of places has taken place for all those applications received on time. The online application system is not available after the deadline.

**DON'T BE LATE – YOU MAY MISS OUT ON A PLACE IN THE SCHOOL YOU WANT**

### What happens if I don't complete a preference form?

If you do not complete or submit a preference form we will not know about your child and the schools which you prefer. You may then find that the school you prefer is full, after the placement of children for whom forms have been received.

### Please REMEMBER:

- With the exception of The Grange School, which is an all through school ([see page 30](#)), there is no automatic transfer from nursery to reception class, and attending a nursery class does not guarantee or give your child a place in the reception class of that school.
- There is no automatic transfer if you have an older child attending your preferred school. You must still complete a preference form.
- Putting your child's name on a school's interested list does not constitute a formal application. You must still complete a preference form with the local authority.
- Do consider the oversubscription criteria for schools you express as a preference. **There is no guarantee of a place at any school**
- **St Bede's Catholic Junior School** ([see page 38](#)) also operates an application process and attendance at St Bede's Catholic Infant School **does not** guarantee your child a place at the school. You **must** apply for a place at St Bede's Catholic Junior School by completing the Infant to Junior Transfer Form 2021, which is available online from [www.halton.gov.uk/schooladmissions](http://www.halton.gov.uk/schooladmissions), following the 'Junior School's' link, or by requesting a form from the School. This form must also be returned by the **closing date of 15<sup>th</sup> January 2021.**

## TIMETABLE FOR ADMISSIONS TO PRIMARY SCHOOLS IN SEPTEMBER 2021

September 2020	<p><b>ADMISSION TO PRIMARY SCHOOL BOOKLETS AVAILABLE AT:</b></p> <ul style="list-style-type: none"> <li>Online at <a href="http://www.halton.gov.uk/schooladmissions">www.halton.gov.uk/schooladmissions</a></li> <li>Paper forms can be obtained online or by contacting School Admissions (0151 511 7338/ 511 7271)</li> </ul>
15 <sup>th</sup> January 2021	<p><b>CLOSING DATE</b> ALL ONLINE AND PAPER PREFERENCE FORMS <b>MUST</b> BE SUBMITTED BY THIS DATE</p> <p><b>DON'T BE LATE - YOU MAY MISS OUT ON A PLACE IN THE SCHOOL YOU WANT</b></p>
21 <sup>st</sup> February 2021	<b>FINAL DATE TO NOTIFY LOCAL AUTHORITY OF ADDRESS CHANGE AND SUPPLY PROOF</b>
16 <sup>th</sup> April 2021	<p><b>NOTIFICATION OF OFFERS</b></p> <ul style="list-style-type: none"> <li>Email offers sent to all online applicants. Parent/carers are also able to log in to their online account to view their offer</li> <li>Offer letters will be posted on this date, notifying parent/carers who have submitted a paper copy of the preference form</li> </ul>
16 <sup>th</sup> May 2021	<b>CLOSING DATE FOR SUBMISSION OF INTENTION TO APPEAL</b>
September 2021	<b>ADMISSION TO PRIMARY SCHOOL</b>
31 <sup>st</sup> December 2021	<b>FORMAL WAITING LISTS CLOSE</b>

## ADMISSION TO SCHOOL

Parents/Carers with a child entering school for the first time or moving into the area, who are uncertain of the appropriate school for their child, should enquire at the nearest school or to the School Admissions Team, on 0151 511 7338/ 511 7271. All information regarding admission to schools is also available at [www.halton.gov.uk/schooladmissions](http://www.halton.gov.uk/schooladmissions)

There are four main types of primary school. These are:

- 1) COMMUNITY**
- 2) VOLUNTARY CONTROLLED**
- 3) VOLUNTARY AIDED (CATHOLIC AND CHURCH OF ENGLAND)**
- 4) ACADEMY**

Halton LA is the admission authority for all Community and Voluntary Controlled schools in Halton. These schools have the same admissions criteria and Halton LA, as the admissions authority, deals with applications for places in the event of oversubscription. In the case of oversubscription, places will be allocated using the published criteria detailed in this booklet. The school governors decide the allocation of places at Voluntary Aided (Church) Schools and Academy schools in accordance with their published admissions policy, and you may be required to provide further information in support of your application.

Church of England schools (CE) are either voluntary aided or voluntary controlled. Church of England voluntary aided schools are schools where the religious education provided is in conformity with the rites, practices and doctrines of the Church of England. A Church of England voluntary controlled school, like a voluntary aided school, is a Church school functioning within the partnership of the Church and the Local Authority. Its Christian nature is an important aspect of the school's life. The religious teaching in it is mainly in accordance with the Agreed Syllabus but this may, for those who wish, be supplemented by specific Church teaching. Worship at its school assemblies is linked with the worship of the Church in accordance with the provisions of its Trust Deed.

All Roman Catholic schools (RC) are voluntary aided or academy schools.

General information about Church schools can be obtained from the appropriate CE and RC Diocesan Education Authorities. Addresses and telephone numbers are set out below:

### CHURCH OF ENGLAND Diocesan Education Authorities

#### **Runcorn Schools**

Director of Education  
Chester Diocesan Board of Education  
Church House  
5500 Daresbury Park  
Daresbury  
WA4 4GE  
Telephone No: 01928 718834  
[www.chester.anglican.org/schools](http://www.chester.anglican.org/schools)

#### **Widnes Schools**

Director of Education  
Diocese of Liverpool Board of Education  
Church House  
1 Hanover Street  
Liverpool  
L1 3DW  
Telephone No: 0151 709 9722  
<https://Liverpool.anglican.org/education-contacts>

### ROMAN CATHOLIC Diocesan Education Authorities

#### **Runcorn Schools**

Director of Schools  
Diocese of Shrewsbury Schools  
Commission  
2 Park Road South  
Birkenhead  
CH43 4UX  
Telephone No: 0151 652 9855  
<https://www.dioceseofshrewsbury.org/education>

#### **Widnes Schools**

Director of Schools and Colleges  
Liverpool Archdiocesan Centre for  
Evangelisation  
Croxteth Drive  
Sefton Park  
Liverpool L17 1AA  
Telephone No: 0151 522 1071  
<http://www.liverpoolcatholic.org.uk/education/>



## ALLOCATION OF PLACES TO HALTON PRIMARY SCHOOLS

In allocating school places, all parents/carers are asked to complete either the online preference form ([www.halton.gov.uk/schooladmissions](http://www.halton.gov.uk/schooladmissions)) or a paper copy of the form, on which they are invited to express up to three preferences. This will enable parental preferences to be fully considered, even if the admission authority (the LA for community and voluntary controlled schools, or the governing body for voluntary aided and academy schools) is unable to comply with parental preference.

All preferences are considered equally against each school's admissions criteria. After all preferences have been considered if only one school named on the preference form can offer a place the Local Authority will send out an offer of a place. If more than one school can offer a place parents will be offered a place at whichever of those schools is ranked highest on the preference form. This may not be the first preference school and there is no guarantee that you will be offered any of your preferences.

### What happens if a School becomes oversubscribed?

Sometimes more applications are received for a particular school than there are places available, and this means that the school is oversubscribed. When a school is oversubscribed places will be allocated in accordance with the relevant oversubscription criteria. Each voluntary aided school has its own criteria and these are detailed later in this booklet.

### OVERSUBSCRIPTION CRITERIA FOR COMMUNITY, VOLUNTARY CONTROLLED AND ACADEMY SCHOOLS WHO ADOPT THE LA'S POLICY

The following criteria will apply to oversubscribed schools:

<b>Children in Public Care</b>	Looked after children (often known as in care) or children who were previously looked after, but immediately after being looked after became subject to an adoption, residence or special guardianship order
<b>Siblings</b>	Pupils with elder brothers or sisters, including half brothers and sisters, and unrelated children <b>living together as part of the same household</b> , already attending the school and expected to continue at the school in the following year
<b>Distance</b>	Pupils living nearest to the school defined as a <b>straight line measurement</b> from the child's permanent residence to the school

**In the instance of a tie regarding distance** for the last place to be offered (to two decimal places in metres), a place will be offered using the electronic admission system's random allocation function.

## APPLYING FOR A SCHOOL FURTHER INFORMATION

- Previously looked after children are children who were looked after, but ceased to be so because they were adopted (or became subject to a residence order or special guardianship order) immediately after they were looked after.
- Children who have an Education, Health and Care Plan (EHCP), will be admitted to the school named in the plan. Please discuss your child's application with the SEND department at the Local Authority.
- Where applications are received for twins, triplets etc. the Local Authority will apply the oversubscription criteria and will oversubscribe the community or voluntary controlled school if a family would otherwise be separated. This would include infant class sizes of 30, where the child would be an excepted pupil for the time they are in an infant class.
- The address to be used in measuring distance for the purpose of allocating school places will be the **child's** permanent address **at the closing date of 15<sup>th</sup> January 2021**. The above criteria will apply without reference to the Halton Borough Council boundary. Distance will be measured by the LA using the LA's Ordnance Survey GIS address point system which measures from the address point of the child's permanent address to the address point of the school in metres. If oversubscription occurs within any one of the above criteria, places will be allocated on distance grounds as described within the distance criteria above.
- If none of the parent's preferences can be met, Halton LA will allocate a school. In Halton, a place will be allocated at the nearest school with vacancies to the home address measured in a straight line distance measurement from the child's permanent residence to the school. This does not affect parent's rights to appeal for a place at the school(s) they have been refused. Parents may also contact School Admissions following receipt of their child's offer of a place, if they are not happy with the offered place and wish to enquire about other Halton schools with vacancies available.
- The law does not give you the "right" to choose a school for your child. However, it does allow you to make a preference as to which school you would like your child to attend. The admissions authority for each school will try and meet that preference in accordance with their admissions policy and oversubscription criteria.
- Parent/carers completing an **online preference form** will be able to view their offer of their child's primary school place on **16<sup>th</sup> April 2021**. Offer letters will also be posted on this date to parents/carers who have submitted a paper copy of the preference form in application.

### Who should apply for reception?

If your child was born **between 1<sup>st</sup> September 2016 and 31<sup>st</sup> August 2017**, he/she is due to start school in September 2021, therefore you need to apply by 15<sup>th</sup> January 2021

## ONLINE APPLICATIONS

### Applying for a school place online

Halton Borough Council offers an online service to parents/carers who are applying for a reception class place in a Halton Primary School for September 2021.

### How to apply online

If you live in Halton and your child is due to transfer to primary school in September 2021 we highly recommend that you [apply online](#) by following the link at:

**[www.halton.gov.uk/schooladmissions](http://www.halton.gov.uk/schooladmissions)**

If you are not a Halton resident, you cannot complete the Halton form and you should contact the council within the area that you live. That authority will then provide you with details of how to apply online.

You will be required to create an account. **It is important that you keep a note of your password and security question, as you will need this to view the outcome of your application on offer day.**

Follow the steps and guidance through the online system, making sure you have completed each section and submit your application. You will receive an acknowledgement email once you have pressed submit. **If you do not receive an acknowledgement email, you must contact the local authority as this may indicate that your application has not been received.**

### Benefits to online application

There are many benefits to making an online application for school admissions, including:

- It's quick, secure and easy to use at [www.halton.gov.uk/schooladmissions](http://www.halton.gov.uk/schooladmissions).
- Applicants can view their offer online on the published offer day, rather than waiting for the offer letter to be received in the post.
- You can apply from home 24 hours a day, 7 days a week
- There is no risk your application will be lost in the post, or elsewhere
- The system guides you through the application and alerts you if any errors have been made
- When you have submitted your application, you will receive an email confirming receipt
- You can log in and view your child's school offer on **16<sup>th</sup> April 2021** (no hard copies will be sent)
- You will also receive your offer of a school place by email on 16<sup>th</sup> April 2021

Please note that if you are applying for a voluntary aided school and you are requested to submit a supplementary information form, and/or proof of baptism or membership of a faith, this information **must be returned directly to the school**, and not to the Local Authority and **must** be returned by the closing date for applications, **15<sup>th</sup> January 2021**.

The online system is available 24 hours a day, 7 days a week up to the closing date of 15<sup>th</sup> January 2021. If you are applying after that date you need to contact the School Admissions Team to request and complete a paper preference form.

## ADDITIONAL ADMISSIONS INFORMATION

### Waiting Lists

Waiting lists will be held for all oversubscribed Primary Schools. The waiting list will automatically comprise all of those pupils refused admission to the school(s) of preference, ordered by the oversubscription criteria of the admission policy. This list will be maintained from the time of initial allocation until 31<sup>st</sup> December 2021 at which point the waiting list will cease. If a place becomes available at an oversubscribed school, the place will be reallocated in accordance with the published oversubscription criteria relevant to that school. Parents/Carers should be aware that their child's place on the waiting list might alter, either up or down, dependent upon the movement of other applicants.

### Equal Preferences

In accordance with regulations, the equal preference model will be used to consider applications for all maintained schools.

In an equal preference scheme your first, second and third preference will be considered at the same time. If potentially you can be offered a place at more than one of your preferences (i.e. because you have a high enough priority for an oversubscribed school, the school is undersubscribed or because the school receives the same number of applications as the number of places available) the single offer made to you will be for the school you ranked the highest on your preference form.

### Late Applications

All applications received before the closing date will be dealt with at the same time. **A preference form received after the closing date of 15<sup>th</sup> January 2021 will be deemed as late and all late applications will be dealt with after those received on time.** Please be aware that a late application will reduce your chance of gaining a place at your preferred school.

If the late application is received after places have been allocated and the school(s) are oversubscribed, the child will be placed on the waiting list, along with all other unsuccessful applications. The child's position on the waiting list will then be determined by the admission policy, not by the date received. Parents/carers have the right of appeal if admission is refused and details on the appeals process are provided later in this booklet.

If parents are making a late application to a voluntary aided school the Local Authority will notify the governing body that the application has been received late and the School will advise how this will be dealt with.

### Place of residence

Where a child lives with parents with shared responsibility, each for part of a week, the child's 'permanent place of residence' will be determined as the address of the parent who normally has the responsibility for the majority of school days in a week. It may be necessary for the admissions authority to carry out checks to confirm that addresses given are genuine. Parents may, therefore, be asked to provide documentary evidence of their child's home address, for example, but not limited to, Council Tax Statement, Benefits Statement, Utility Bills, letter from registered GP, etc.

## Change of address

If you move house after the closing date of 15<sup>th</sup> January 2021 you **must** notify School Admissions by emailing [schooladmissions@halton.gov.uk](mailto:schooladmissions@halton.gov.uk), providing your child's details and your new address. You may be required to complete a new preference form and you will be advised of this at this time. Proof of change of address will be required to support your application. **Please note:** the address stated on the preference form must be where the child is currently residing, and **not a future address**.

### IMPORTANT:

Your address and criteria will not be changed unless supporting evidence of the house move is received by the Local Authority. **This information must be received by 21<sup>st</sup> February 2021**

Proof of residency received after this date **cannot** be used for the initial allocation of School Places as this process will be in final stages.

## Change of preference

If you decide to change your preference after the closing date of 15<sup>th</sup> January 2021 you will need to complete another preference form and your previous preference form will be disregarded. The online facility will not be available after the closing date and you must complete a hard copy preference form. If places have already been allocated the LA may not be able to meet your change of preference. **Please be aware that a change of preference after the closing date will result in your application being treated as a late application and may affect your chances of gaining a place at your preference school.**

## Admissions age

The Secretary of State for Education and Employment has defined compulsory school age under the Education Act 1996 as follows:

### Child's 5th Birthday

1<sup>st</sup> September to 31<sup>st</sup> December

1<sup>st</sup> January to 31<sup>st</sup> March

1<sup>st</sup> April to 31<sup>st</sup> August (summer-born)

### Lawful Term of Admission

Spring

Summer

Autumn

**In Halton, however, children will continue to be admitted to school earlier than the lawful admission date. This reflects the commitment of the LA to secure the best possible start for children within the Borough of Halton**

Children reaching the age of five between 1<sup>st</sup> September and 31<sup>st</sup> August may be admitted full-time on the first day of the Autumn Term before their fifth birthday (i.e. in September). Schools may phase their intake but this will be decided at school level. A request for admission earlier than described would not normally be permitted.

If your child is presently attending a nursery class, please note that you **do not have an automatic right to transfer to the primary school to which the nursery class is attached**. You will need to indicate your preference for a primary school along with all other parents. Attendance at a nursery school plays no part in the admission to school process. The only exception to this is The Grange School, which is an all-through school, providing the child is **on roll at the nursery by the closing date of 15<sup>th</sup> January 2021**.

## Deferred entry to school

Parents/carers can defer/delay their child's entry to school until the child is of compulsory school age if they wish. If a parent/carer is offered and accepts a place during the normal admissions round, but would prefer to defer their child's entry to school until he or she is of compulsory school age, the admission authority must agree to the parents request provided the place is taken up within the same academic year, but not beyond the beginning of the term following the child's fifth birthday. (i.e. statutory school age)

## Parents of summer-born children – Request to educate outside of normal age group

The Department for Education has issued guidance regarding the admission of summer-born children to reception class outside of their normal age group (starting reception class after their fifth birthday). Parents considering making such a request are advised to speak to the Headteacher of their preference school(s) and the School Admissions Team, and must make the request during the normal admissions round within their child's normal age group (the academic year in which they turn five), and submit a preference form in application during this round and before the deadline for applications, being **15<sup>th</sup> January 2021**. All admissions authorities must consider a parent's request, and all evidence provided, for their child to be educated outside their normal age group, but they are not obligated to adhere to the request, and will make a decision which is in the best interests of the child. If the request is agreed, parents will then be required to complete a new preference form in the year following and their application for admission within the normal age group will be discarded. Parents do not have the right to appeal against a decision not to admit a child to a certain year group if admission to another year group at the school has been offered.

## Withdrawal of offer of a school place

The Council reserves the right to withdraw the offer of a school place if it has been offered in error, or it is established that the offer was obtained through a fraudulent or intentionally misleading application. This may include where a fraudulent/intentionally misleading preference form is received claiming a false sibling or false residence, or the child's date of birth has been falsified.

## Infant Class Size Legislation

By law, no infant class (Reception, Year 1 and Year 2) should normally have more than 30 pupils with one teacher. This applies to all Halton schools. Head teachers are responsible for ensuring that classes are organised to comply with this requirement and this is monitored by the local authority. There are few exceptions to this rule which can be found within the School Admissions Code 2014 and further information is available at [www.halton.gov.uk/schooladmissions](http://www.halton.gov.uk/schooladmissions).

## Accepting an offer of a school place

In Halton, you are **not required** to accept an offer of a school place. Places are *automatically accepted* once they have been offered, unless you notify us otherwise. Other local authorities may request that you formally accept the place and you should check this when making a preference for a school (s) in another local authority. If you wish to decline your offer of a school place for your child, you must do this in writing as soon as possible, preferably by emailing [schooladmissions@halton.gov.uk](mailto:schooladmissions@halton.gov.uk) and explaining that you do not wish to accept the offer and notifying us of the alternative arrangements for your child.



## PRIMARY SCHOOLS IN HALTON

### COMMUNITY AND VOLUNTARY CONTROLLED SCHOOLS

The following pages provide details on the Community and Voluntary Controlled Primary schools in Halton.

The Local Authority is responsible for admissions to these schools, and the oversubscription criteria detailed on **page 9** applies to all the schools listed in this section.

<p><b>All Saints Upton Church of England Voluntary Controlled Primary School</b></p> <p>Age range 4 – 11 (mixed) Anticipated number on roll: 201 <b>Published Admission Number September 2021: 30</b></p> <p><b>The school was oversubscribed for the 2020 intake.</b></p> <p><b>Published Admission Number September 2020: 30</b> <b>Appeals Registered: 2</b> <b>Upheld Appeals: 0</b> <b>Pupils Allocated for September 2020: 30</b></p> <p>Number of parents expressing each preference: Preference 1: 33 Preference 2: 20 Preference 3: 19</p>	<p>Hough Green Road, Widnes, WA8 4PG</p> <p>Head teacher: Mrs E Boyden</p> <p>Tel: 0151 257 2450</p> <p>Website: <a href="http://www.allsaintsuputon.halton.sch.uk">www.allsaintsuputon.halton.sch.uk</a></p> <p><b>National Offer Day 2020</b> <b>Position:</b> Last place criteria: Distance Distance last place: 804.02 metres</p>
<p><b>Astmoor Primary School</b></p> <p>Age range 4 – 11 (mixed) Anticipated number on roll: 121 <b>Published Admission Number September 2021: 25</b></p> <p>Last academic year all applications were accommodated</p> <p><b>Published Admission Number September 2020: 25</b> <b>Pupils Allocated for September 2020: 12</b></p> <p>Number of parents expressing each preference: Preference 1: 8 Preference 2: 8 Preference 3: 5</p>	<p>Kingshead Close, Runcorn, WA7 2JE</p> <p>Head teacher: Mrs L Aldridge</p> <p>Tel: 01928 565053</p> <p>Website: <a href="http://www.astmoorprimaryschool.co.uk">www.astmoorprimaryschool.co.uk</a></p>

<p><b>Beechwood Primary School</b></p> <p>Age range 4 – 11 (mixed) Anticipated number on roll: 161 <b>Published Admission Number September 2021: 20</b></p> <p><b>The school was oversubscribed for the 2020 intake.</b></p> <p><b>Published Admission Number September 2020: 20</b> <b>Appeals Registered: 4</b> <b>Upheld Appeals: 4</b> <b>Pupils Allocated for September 2020: 25</b></p> <p>Number of parents expressing each preference: Preference 1: 40 Preference 2: 24 Preference 3: 7</p>	<p>Grasmere Drive, Runcorn, WA7 2TT</p> <p>Head teacher: Mrs. S Kidd</p> <p>Tel: 01928 560479</p> <p>Website: <a href="http://www.beechwoodschoolruncorn.co.uk">www.beechwoodschoolruncorn.co.uk</a></p> <p><b>National Offer Day 2020</b> <b>Position:</b> Last place criteria: Distance Distance last place: 506.99 metres</p>
<p><b>Brookvale Primary School</b></p> <p>Age range 4 – 11 (mixed) Anticipated number on roll: 264 <b>Published Admission Number September 2021: 40</b></p> <p>Last academic year all applications were accommodated</p> <p><b>Published Admission Number September 2020: 40</b> <b>Pupils Allocated for September 2020: 40</b></p> <p>Number of parents expressing each preference: Preference 1: 39 Preference 2: 13 Preference 3: 10</p>	<p>Old Northwich Road, Runcorn, WA7 6BZ</p> <p>Head teacher: Mrs. P Casey</p> <p>Tel: 01928 711401</p> <p>Website: <a href="http://brookvale.halton.sch.uk/Pages/Home.aspx">http://brookvale.halton.sch.uk/Pages/Home.aspx</a></p>
<p><b>Castle View Primary School</b></p> <p>Age range 4 – 11 (mixed) Anticipated number on roll: 145 <b>Published Admission Number September 2021: 20</b></p> <p><b>The school was oversubscribed for the 2020 intake.</b></p> <p><b>Published Admission Number September 2020: 20</b> <b>Appeals Registered: 4</b> <b>Upheld Appeals: 0</b> (All admitted exceptionally prior to appeal) <b>Pupils Allocated for September 2020: 24</b></p> <p>Number of parents expressing each preference: Preference 1: 27 Preference 2: 8 Preference 3: 9</p>	<p>Medway, Runcorn, WA7 2DZ</p> <p>Head teacher: Mrs. H Melerangi</p> <p>Tel: 01928 563970</p> <p>Website: <a href="http://www.castleviewprimaryschool.co.uk">www.castleviewprimaryschool.co.uk</a></p> <p><b>National Offer Day 2020</b> <b>Position:</b> Last place criteria: Distance Distance last place: 5505.21 metres</p>



<p><b>Fairfield Primary School</b></p> <p>Age range 4 – 11 (mixed) Anticipated number on roll: 596 <b>Published Admission Number September 2021: 90</b></p> <p>Last academic year all applications were accommodated</p> <p><b>Published Admission Number September 2020: 90</b> <b>Pupils Allocated for September 2020: 86</b></p> <p>Number of parents expressing each preference: Preference 1: 66 Preference 2: 36 Preference 3: 48</p>	<p>Peelhouse Lane, Widnes, WA8 6TH</p> <p>Head teacher: Mrs. V Pierce</p> <p>Tel: 0151 424 4879</p> <p>Website: <a href="http://www.fairfieldprimaryschool.org.uk">www.fairfieldprimaryschool.org.uk</a></p>
<p><b>Farnworth Church of England Controlled Primary School</b></p> <p>Age range 4 – 11 (mixed) Anticipated number on roll: 419 <b>Published Admission Number September 2021: 60</b></p> <p><b>The school was oversubscribed for the 2020 intake.</b></p> <p><b>Published Admission Number September 2020: 60</b> <b>Appeals Registered: 4</b> <b>Upheld Appeals: 0</b> <b>Pupils Allocated for September 2020: 60</b></p> <p>Number of parents expressing each preference: Preference 1: 72 Preference 2: 71 Preference 3: 45</p>	<p>Pit Lane, Widnes, WA8 9HS</p> <p>Head teacher: Mr A Redman</p> <p>Tel: 0151 424 3042</p> <p>Website: <a href="https://farnworthprimary.eschools.co.uk/web">https://farnworthprimary.eschools.co.uk/web</a></p> <p><b>National Offer Day 2020</b> <b>Position:</b> Last place criteria: Distance Distance last place: 1115.15 metres</p>
<p><b>Gorsewood Primary School</b></p> <p>Age range 4 – 11 (mixed) Anticipated number on roll: 192 <b>Published Admission Number September 2021: 30</b></p> <p>Last academic year all applications were accommodated.</p> <p><b>Published Admission Number September 2020: 30</b> <b>Pupils Allocated for September 2020: 29</b></p> <p>Number of parents expressing each preference: Preference 1: 29 Preference 2: 15 Preference 3: 9</p>	<p>Gorsewood Road, Runcorn, WA7 6ES</p> <p>Head teacher: Mrs. J Gregg</p> <p>Tel: 01928 712100</p> <p>Website: <a href="http://www.gorsewood.halton.sch.uk">www.gorsewood.halton.sch.uk</a></p>

<p><b>Hale Church of England Voluntary Controlled Primary School</b></p> <p>Age range 4 – 11 (mixed) Anticipated number on roll: 186 <b>Published Admission Number September 2021: 25</b></p> <p><b>The school was oversubscribed for the 2020 intake.</b></p> <p><b>Published Admission Number September 2020: 25</b> <b>Appeals Registered: 2</b> <b>Upheld Appeals: 1</b> <b>Pupils Allocated for September 2020: 26</b></p> <p>Number of parents expressing each preference: Preference 1: 26 Preference 2: 5 Preference 3: 4</p>	<p>Hesketh Road, Hale, L24 4AN</p> <p>Interim Executive Head teacher: Mrs. V Pierce</p> <p>Tel: 0151 425 3023</p> <p>Website: <a href="http://hale.haltonschoools.info/">http://hale.haltonschoools.info/</a></p> <p><b>National Offer Day 2020</b> <b>Position:</b> Last place criteria: Distance Distance last place: 3755.99 metres</p>
<p><b>Halebank Church of England Voluntary Controlled Primary School</b></p> <p>Age range 4 – 11 (mixed) Anticipated number on roll: 94 Published Admission Number September 2021: 15</p> <p>Last academic year all applications were accommodated</p> <p><b>Published Admission Number September 2020: 15</b> <b>Pupils Allocated for September 2020: 13</b></p> <p>Number of parents expressing each preference: Preference 1: 8 Preference 2: 10 Preference 3: 3</p>	<p>Heathview Road, Widnes, WA8 8UT</p> <p>Head teacher: Mr. R Harley</p> <p>Tel: 0151 424 4878</p> <p>Website: <a href="https://www.halebank.halton.sch.uk/">https://www.halebank.halton.sch.uk/</a></p>
<p><b>Hallwood Park Primary and Nursery School</b></p> <p>Age range 4 – 11 (mixed) Anticipated number on roll: 113 <b>Published Admission Number September 2021: 25</b></p> <p>Last academic year all applications were accommodated.</p> <p><b>Published Admission Number September 2020: 25</b> <b>Pupils Allocated for September 2020: 13</b></p> <p>Number of parents expressing each preference: Preference 1: 13 Preference 2: 6 Preference 3: 2</p>	<p>Hallwood Park Avenue, Runcorn, WA7 2FL</p> <p>Head teacher: Mrs K Goodwin</p> <p>Tel: 01928 716336</p> <p>Website: <a href="http://www.hallwoodpark.co.uk/">www.hallwoodpark.co.uk/</a></p>

<p><b>Halton Lodge Primary School</b></p> <p>Age range 4 – 11 (mixed) Anticipated number on roll: 210 <b>Published Admission Number September 2021: 30</b></p> <p><b>The school was oversubscribed for the 2020 intake.</b></p> <p><b>Published Admission Number September 2020: 30</b> <b>Pupils Allocated for September 2020: 30</b></p> <p>Number of parents expressing each preference: Preference 1: 35 Preference 2: 15 Preference 3: 6</p>	<p>Grangeway, Runcorn, WA7 5LU</p> <p>Head teacher: Mr. A Hildrup</p> <p>Tel: 01928 564053</p> <p>Website: <a href="http://www.haltonlodge.halton.sch.uk">www.haltonlodge.halton.sch.uk</a></p> <p><b>National Offer Day 2020</b> <b>Position:</b> Last place criteria: Distance Distance last place: 815.78 metres</p>
<p><b>Hillview Primary School</b></p> <p>Age range 4 – 11 (mixed) Anticipated number on roll: 204 <b>Published Admission Number September 2021: 30</b></p> <p><b>The school was oversubscribed for the 2020 intake.</b></p> <p><b>Published Admission Number September 2020: 30</b> <b>Appeals Registered: 2</b> <b>Upheld Appeals: 0</b> <b>Pupils Allocated for September 2020: 30</b></p> <p>Number of parents expressing each preference: Preference 1: 32 Preference 2: 16 Preference 3: 10</p>	<p>Beechwood Avenue, Runcorn, WA7 3HB</p> <p>Head Teacher: Mr. R Jackson</p> <p>Tel: 01928 714666</p> <p>Website: <a href="http://www.hillview.halton.sch.uk">www.hillview.halton.sch.uk</a></p> <p><b>National Offer Day 2020</b> <b>Position:</b> Last place criteria: Distance Distance last place: 1055.12 metres</p>
<p><b>Lunt's Heath Primary School</b></p> <p>Age range 4 – 11 (mixed) Anticipated number on roll: 408 <b>Published Admission Number September 2021: 60</b></p> <p><b>The school was oversubscribed for the 2020 intake.</b></p> <p><b>Published Admission Number September 2020: 60</b> <b>Appeals Registered: 5</b> <b>Upheld Appeals: 0</b> <b>Pupils Allocated for September 2020: 60</b></p> <p>Number of parents expressing each preference: Preference 1: 71 Preference 2: 78 Preference 3: 35</p>	<p>Wedgewood Drive, Widnes, WA8 9RJ</p> <p>Head teacher: Mr. A Williams</p> <p>Tel: 0151 423 3322</p> <p>Website: <a href="http://www.luntsheathprimary.co.uk">www.luntsheathprimary.co.uk</a></p> <p><b>National Offer Day 2020</b> <b>Position:</b> Last place criteria: Distance Distance last place: 1372.77 metres</p>

<p><b>Moore Primary School</b></p> <p>Age range 4 – 11 (mixed) Anticipated number on roll: 209 <b>Published Admission Number September 2021: 30</b></p> <p><b>The school was oversubscribed for the 2020 intake.</b></p> <p><b>Published Admission Number September 2020: 30</b> <b>Appeals Registered: 4</b> <b>Upheld Appeals: 0</b> <b>Pupils Allocated for September 2020: 30</b></p> <p>Number of parents expressing each preference: Preference 1: 37 Preference 2: 16 Preference 3: 13</p>	<p>Lindfield Close, Moore, WA4 6UG</p> <p>Head teacher: Mrs. E Smith</p> <p>Tel: 01925 740326</p> <p>Website: <a href="http://www.moore.halton.dbprimary.co.uk/">www.moore.halton.dbprimary.co.uk/</a></p> <p><b>National Offer Day 2020</b> <b>Position:</b>Last place criteria: Distance Distance last place: 2384.20 metres</p>
<p><b>Moorfield Primary School</b></p> <p>Age range 4 – 11 (mixed) Anticipated number on roll: 269 <b>Published Admission Number September 2021: 45</b></p> <p>Last academic year all applications were accommodated.</p> <p><b>Published Admission Number September 2020: 45</b> <b>Pupils Allocated for September 2020: 33</b></p> <p>Number of parents expressing each preference: Preference 1: 24 Preference 2: 21 Preference 3: 12</p>	<p>Moorfield Road, Widnes, WA8 3HJ</p> <p>Head teacher: Mrs. K Heyes</p> <p>Tel: 0151 424 3108</p> <p>Website: <a href="http://www.moorfieldprimary.co.uk">www.moorfieldprimary.co.uk</a></p>
<p><b>Murdishaw West Community Primary School</b></p> <p>Age range 4 – 11 (mixed) Anticipated number on roll: 161 <b>Published Admission Number September 2021: 30</b></p> <p>Last academic year all applications were accommodated.</p> <p><b>Published Admission Number September 2020: 30</b> <b>Pupils Allocated for September 2020: 23</b></p> <p>Number of parents expressing each preference: Preference 1: 24 Preference 2: 12 Preference 3: 8</p>	<p>Barnfield Avenue, Runcorn, WA7 6EP</p> <p>Head teacher: Mr C Stanley</p> <p>Tel: 01928 711254</p> <p>Website: <a href="http://www.mwcp.co.uk">www.mwcp.co.uk</a></p>

<p><b>Oakfield Community Primary School</b></p> <p>Age range 4 – 11 (mixed) Anticipated number on roll: 282 <b>Published Admission Number September 2021: 40</b></p> <p><b>The school was oversubscribed for the 2020 intake.</b></p> <p><b>Published Admission Number September 2020: 40</b> <b>Appeals Registered: 3</b> <b>Upheld Appeals: 3</b> <b>Pupils Allocated for September 2020: 41</b></p> <p>Number of parents expressing each preference: Preference 1: 41 Preference 2: 21 Preference 3: 17</p>	<p>Edinburgh Road, Widnes, WA8 8BQ</p> <p>Head teacher: Mrs. C Khan</p> <p>Tel: 0151 424 4958</p> <p>Website: <a href="http://www.oakfield-widnes.co.uk/">www.oakfield-widnes.co.uk/</a></p> <p><b>National Offer Day 2020</b> <b>Position:</b> Last place criteria: Distance Distance last place: 2980.30 metres</p>
<p><b>Pewithall Primary School</b></p> <p>Age range 4 – 11 (mixed) Anticipated number on roll: 213 <b>Published Admission Number September 2021: 30</b></p> <p><b>The school was oversubscribed for the 2020 intake.</b></p> <p><b>Published Admission Number September 2020: 30</b> <b>Appeals Registered: 1</b> <b>Upheld Appeals: 0</b> <b>Pupils Allocated for September 2020: 30</b></p> <p>Number of parents expressing each preference: Preference 1: 38 Preference 2: 44 Preference 3: 24</p>	<p>Kenilworth Avenue, Runcorn, WA7 4XQ</p> <p>Head teacher: Mr. D Baugh</p> <p>Tel: 01928 576139</p> <p>Website: <a href="http://www.pewithall.org.uk">www.pewithall.org.uk</a></p> <p><b>National Offer Day 2020</b> <b>Position:</b> Last place criteria: Distance Distance last place: 842.61 metres</p>
<p><b>Simms Cross Primary School</b></p> <p>Age range 4 – 11 (mixed) Anticipated number on roll: 224 <b>Published Admission Number September 2021: 40</b></p> <p>Last academic year all applications were accommodated.</p> <p><b>Published Admission Number September 2020: 40</b> <b>Pupils Allocated for September 2020: 38</b></p> <p>Number of parents expressing each preference: Preference 1: 33 Preference 2: 9 Preference 3: 5</p>	<p>Kingsway, Widnes, WA8 7QS</p> <p>Executive Head teacher: Mrs N Kearney</p> <p>Tel: 0151 424 5031</p> <p>Website: <a href="http://www.simmscrossprimaryschool.co.uk">www.simmscrossprimaryschool.co.uk</a></p>

<p><b>The Brow Community Primary School</b></p> <p>Age range 4 – 11 (mixed) Anticipated number on roll: 158 <b>Published Admission Number September 2021: 25</b></p> <p>Last academic year all applications were accommodated.</p> <p><b>Published Admission Number September 2020: 25</b> <b>Pupils Allocated for September 2020: 21</b></p> <p>Number of parents expressing each preference: Preference 1: 19 Preference 2: 5 Preference 3: 4</p>	<p>The Clough, Runcorn, WA7 2HB</p> <p>Head teacher: Mrs. L Webb</p> <p>Tel: 01928 563089</p> <p>Website: <a href="https://thebrowprimaryschool.com/halton/primary/thebrow">https://thebrowprimaryschool.com/halton/primary/thebrow</a></p>
<p><b>Victoria Road Primary School</b></p> <p>Age range 4 – 11 (mixed) Anticipated number on roll: 233 <b>Published Admission Number September 2021: 40</b></p> <p>Last academic year all applications were accommodated</p> <p>Published Admission Number September 2020: 40 <b>Pupils Allocated for September 2020: 29</b></p> <p>Number of parents expressing each preference: Preference 1: 25 Preference 2: 16 Preference 3: 18</p>	<p>Victoria Road, Runcorn, WA7 5BN</p> <p>Head teacher: Ms. E Roberts</p> <p>Tel: 01928 574644</p> <p>Website: <a href="http://www.victoriaroadprimary.halton.sch.uk">www.victoriaroadprimary.halton.sch.uk</a></p>
<p><b>Westfield Primary School</b></p> <p>Age range 4 – 11 (mixed) Anticipated number on roll: 121 <b>Published Admission Number September 2021: 25</b></p> <p>Last academic year all applications were accommodated</p> <p><b>Published Admission Number September 2020: 25</b> <b>Pupils Allocated for September 2020: 13</b></p> <p>Number of parents expressing each preference: Preference 1: 13 Preference 2: 5 Preference 3: 1</p>	<p>Clayton Crescent, Runcorn, WA7 4TR</p> <p>Acting Head teacher: Mrs. S Pope</p> <p>Tel: 01928 572343</p> <p>Website: <a href="http://www.westfieldprimaryschool.com">www.westfieldprimaryschool.com</a></p>

<p><b>Weston Primary School</b></p> <p>Age range 4 – 11 (mixed) Anticipated number on roll: 211 <b>Published Admission Number September 2021: 30</b></p> <p><b>The school was oversubscribed for the 2020 intake.</b></p> <p><b>Published Admission Number September 2020: 30</b> <b>Appeals Registered: 3</b> <b>Upheld Appeals: 0</b> <b>Pupils Allocated for September 2020: 30</b></p> <p>Number of parents expressing each preference: Preference 1: 29 Preference 2: 18 Preference 3: 8</p>	<p>Lambstick Lane, Weston, Runcorn, WA7 4RA</p> <p>Head teacher: Mrs. R Atkins</p> <p>Tel: 01928 574544</p> <p>Website: <a href="http://weston.halton.sch.uk/">http://weston.halton.sch.uk/</a></p> <p><b>National Offer Day 2020</b> <b>Position:</b> Last place criteria: Distance Distance last place: 1909.85 metres</p>
<p><b>Weston Point Community Primary School</b></p> <p>Age range 4 – 11 (mixed) Anticipated number on roll: 167 <b>Published Admission Number September 2021: 20</b></p> <p><b>The school was oversubscribed for the 2020 intake.</b></p> <p><b>Published Admission Number September 2020: 20</b> <b>Appeals Registered: 4</b> <b>Upheld Appeals: 0</b> (All admitted exceptionally prior to appeal) <b>Pupils Allocated for September 2020: 24</b></p> <p>Number of parents expressing each preference: Preference 1: 28 Preference 2: 8 Preference 3: 8</p>	<p>Castner Avenue, Runcorn, WA7 4EQ</p> <p>Head teacher: Miss. N Curphey</p> <p>Tel: 01928 574593</p> <p>Website: <a href="http://westonpoint.halton.sch.uk/Pages/Home.aspx">http://westonpoint.halton.sch.uk/Pages/Home.aspx</a></p> <p><b>National Offer Day 2020</b> <b>Position:</b> Last place criteria: Distance Distance last place: 385.49 metres</p>
<p><b>Windmill Hill Primary School</b></p> <p>Age range 4 – 11 (mixed) Anticipated number on roll: 175 <b>Published Admission Number September 20: 25</b></p> <p>Last academic year all applications were accommodated.</p> <p><b>Published Admission Number September 2020: 25</b> <b>Pupils Allocated for September 2020: 24</b></p> <p>Number of parents expressing each preference: Preference 1: 29 Preference 2: 5 Preference 3: 3</p>	<p>Windmill Hill, Runcorn, WA7 6QE</p> <p>Head teacher: Mrs. P Newman</p> <p>Tel: 01928 712337</p> <p>Website: <a href="http://www.windmillhill.school">www.windmillhill.school</a></p>

<p><b>Woodside Primary School</b></p> <p>Age range 4 – 11 (mixed) Anticipated number on roll: 124 <b>Published Admission Number September 2021: 30</b></p> <p>Last academic year all applications were accommodated.</p> <p><b>Published Admission Number September 2020: 30</b> <b>Pupils Allocated for September 2020: 11</b></p> <p>Number of parents expressing each preference: Preference 1: 10 Preference 2: 6 Preference 3: 3</p>	<p>Whitchurch Way, Runcorn, WA7 5YP</p> <p>Head teacher: Mr. R Collings</p> <p>Tel: 01928 564031</p> <p>Website: <a href="https://www.woodsideprimary.co.uk/">https://www.woodsideprimary.co.uk/</a></p>
---	--



## ACADEMY SCHOOLS

The Schools listed in this section provide details on Academy Schools in Halton. Each school has an individual admission policy which is the responsibility of the school governors. The details below provide only a summary of the oversubscription criteria and **full details of the schools policies can be viewed on the schools' websites**, unless advised that the school adopts the LA policy.

<p><b>Bridgewater Park Primary School</b></p> <p>Age range 4 – 11 (mixed) Anticipated number on roll: 101 <b>Published Admission Number September 2021: 30</b></p> <p>Last academic year all applications were accommodated</p> <p><b>Published Admission Number September 2020: 30</b> <b>Pupils Allocated for September 2020: 10</b></p> <p>Number of parents expressing each preference: Preference 1: 10 Preference 2: 9 Preference 3: 4</p>	<p>Plantation Close, Runcorn, WA7 2LW</p> <p>Head of School: Ms. K Murphy</p> <p>Tel: 01928 563838</p> <p>Website: <a href="http://www.bridgewaterpark.halton.sch.uk">www.bridgewaterpark.halton.sch.uk</a></p>
<p><b>Oversubscription Criteria:</b></p> <ol style="list-style-type: none"> <li>1. Children designated as Looked After Children or previously Looked After Children.</li> <li>2. Children in the Nursery at Bridgewater Park Primary School at the time of application who wish to transfer.</li> <li>3. Where there are professionally supported medical reasons, or professionally supported exceptional social reasons why a child should attend the school. Written evidence from a Doctor, Social Worker, Health Visitor, Housing officer, Borough School Attendance Officer or other relevant Council Officer will be required at the time of application. (Refugees and Asylum Seeking children may be included under this criterion, depending on individual circumstances.) <b>This evidence must be sent <u>directly to the school</u> by the closing date for applications, being 15<sup>th</sup> January 2021.</b></li> <li>4. Applicants who have an older sibling who will be attending Bridgewater Park Primary School, at the intended time of admission.</li> <li>5. Remaining places will be offered on the basis of proximity of the child's home address to the school.</li> </ol>	

<p><b>Daresbury Primary School</b></p> <p>Age range 4 – 11 (mixed)          Anticipated Number on roll: 171  <b>Published Admission Number September 2021: 30</b></p> <p>Last academic year all applications were accommodated</p> <p><b>Published Admission Number September 2020: 30</b>  <b>Pupils Allocated for September 2020: 27</b></p> <p>Number of parents expressing each preference:          Preference 1: 25          Preference 2: 36          Preference 3: 10</p>	<p>Chester Road, Daresbury,          WA4 4AJ</p> <p>Principal: Mrs. C Roberts</p> <p>Tel: 01925 740309</p> <p>Website:  <a href="http://daresbury.halton.sch.uk/Pages/Home.aspx">http://daresbury.halton.sch.uk/Pages/Home.aspx</a></p>
<p><b>Oversubscription Criteria:</b></p> <ol style="list-style-type: none"> <li>1. Children designated as Looked After Children or previously Looked After Children.</li> <li>2. Where there are professionally supported medical reasons, or professionally supported exceptional social reasons why a child should attend the school. Written evidence from a Doctor, Social Worker, Health Visitor, Housing officer, Borough School Attendance Officer or other relevant Council Officer will be required at the time of application. (Refugees and Asylum Seeking children may be included under this criterion, depending on individual circumstances.) <b>This evidence must be sent <u>directly to the school</u> by the closing date for applications, being 15<sup>th</sup> January 2021.</b></li> <li>3. Applicants who have an older sibling who will be attending Bridgewater Park Primary School, at the intended time of admission.</li> <li>4. Remaining places will be offered on the basis of proximity of the child's home address to the school.</li> </ol>	

<p><b>Ditton Primary School</b></p> <p>Age range 4 – 11 (mixed) Anticipated number on roll: 398 <b>Published Admission Number September 2021: 60</b></p> <p>Last academic year all applications were accommodated</p> <p><b>Published Admission Number September 2020: 60</b> <b>Pupils Allocated for September 2020: 59</b></p> <p>Number of parents expressing each preference: Preference 1: 54 Preference 2: 19 Preference 3: 12</p> <p><b>This academy school follows the oversubscription criteria for Halton Local Authority.</b></p>	<p>Liverpool Road, Widnes, WA8 8LD</p> <p>Head teacher: Mrs. E Fenton</p> <p>Tel: 0151 424 5861</p> <p>Website: <a href="https://www.dittonprimary.co.uk/halton/primary/ditton">https://www.dittonprimary.co.uk/halton/primary/ditton</a></p>
--	---

<p><b>Palace Fields Primary School</b></p> <p>Age range 4 – 11 (mixed)          Anticipated number on roll: 177  <b>Published Admission Number September 2021: 30</b></p> <p>Last academic year all applications were accommodated</p> <p><b>Published Admission Number September 2020: 30</b>  <b>Pupils Allocated for September 2020: 18</b></p> <p>Number of parents expressing each preference:          Preference 1: 18          Preference 2: 7          Preference 3: 6</p>	<p>Badger Close, Runcorn,          WA7 2QW</p> <p>Principal: Mr P Holloway</p> <p>Tel: 01928 716521</p> <p>Website:  <a href="http://www.palacefieldsprimary.org.uk">www.palacefieldsprimary.org.uk</a></p>
<p><b>Oversubscription Criteria:</b></p> <ol style="list-style-type: none"> <li>1. Children designated as Looked After Children or previously Looked After Children.</li> <li>2. Children in the Nursery at Bridgewater Park Primary School at the time of application who wish to transfer.</li> <li>3. Where there are professionally supported medical reasons, or professionally supported exceptional social reasons why a child should attend the school. Written evidence from a Doctor, Social Worker, Health Visitor, Housing officer, Borough School Attendance Officer or other relevant Council Officer will be required at the time of application. (Refugees and Asylum Seeking children may be included under this criterion, depending on individual circumstances.) <b>This evidence must be sent <u>directly to the school</u> by the closing date for applications, being 15<sup>th</sup> January 2021.</b></li> <li>4. Applicants who have an older sibling who will be attending Bridgewater Park Primary School, at the intended time of admission.</li> <li>5. Remaining places will be offered on the basis of proximity of the child's home address to the school.</li> </ol>	

<p><b>Widnes Academy</b></p> <p>Age range 4 – 11 (mixed) Anticipated number on roll: 153 <b>Published Admission Number September 2021: 30</b></p> <p>Last academic year all applications were accommodated.</p> <p><b>Published Admission Number September 2020: 30</b> <b>Pupils Allocated for September 2020: 26</b></p> <p>Number of parents expressing each preference: Preference 1: 26 Preference 2: 0 Preference 3: 0</p> <p><b>This academy school follows the oversubscription criteria for Halton Local Authority.</b></p>	<p>Cholmondeley Street, Widnes, WA8 0EL</p> <p>Head teacher: Mrs K Highcock</p> <p>Tel: 0151 424 2799</p> <p>Website: <a href="https://www.widnesacademy.co.uk">https://www.widnesacademy.co.uk</a></p>
<p><b>The Grange School – All Through Academy</b></p> <p>Age range 4 – 11 (mixed) Anticipated number on roll KS1: 374 <b>Published Admission Number September 2021: 60</b></p> <p>Last academic year all applications were accommodated</p> <p><b>Published Admission Number September 2020: 60</b> Pupils Allocated for September 2020: 45</p> <p>Number of parents expressing each preference: Preference 1: 46 Preference 2: 24 Preference 3: 17</p>	<p>Latham Avenue, Runcorn, WA7 5DX</p> <p>Principal: Mr I Critchely</p> <p>Tel: 01928 562 660</p> <p>Website: <a href="http://www.thegrange.com">www.thegrange.com</a></p>
<p><b>Oversubscription Criteria:</b></p> <p>The Grange is a designated all through Academy school, therefore children enrolled in the school's nursery will automatically transfer from the nursery to primary and primary to secondary phases within The Grange. Following the transfer of those children from the nursery to reception class, the remaining places will be allocated in accordance with the local authority's admissions oversubscription criteria as detailed on page 9.</p> <p>Please be aware that a child currently at the Grange Nursery can opt out of an automatic transfer to the Grange Infant by requesting an alternative school by completing a preference form online or by requesting a paper copy. <b>If an application is made to another school then this will remove the right to automatic transfer.</b></p> <p>If your child starts at the Grange Nursery after the deadline for Primary School applications (15th January 2021), or after the allocation letters are sent (16th April 2021), please ensure you contact the School and the Local Authority as a place may not be guaranteed.</p>	

## VOLUNTARY AIDED (CHURCH OF ENGLAND) SCHOOLS

The schools listed in this section are Voluntary Aided Church of England Primary Schools. Each school has an individual admission policy which is the responsibility of the school governors. The details below provide only a summary of the oversubscription criteria and **full details of the schools policies can be viewed on the schools' websites**, together with a copy of the school's supplementary application form (if required). The schools will advise when the supplementary information form is required.

<p><b>Runcorn All Saints' CE Primary School</b></p> <p>Age range 4 – 11 (mixed)          Anticipated number on roll: 109  <b>Published Admission Number September 2021: 20</b></p> <p>Last academic year all applications were accommodated</p> <p><b>Published Admission Number September 2020: 20</b>  <b>Pupils Allocated for September 2020: 16</b>          Number of parents expressing each preference:          Preference 1: 15          Preference 2: 4          Preference 3: 4</p>	<p>Church Street, Runcorn,          WA7 1LD</p> <p>Acting Head teacher: Mrs J. D Lorenzo</p> <p>Tel: 01928 572091</p> <p>Website:  <a href="https://www.allsaintscephprimaryschool.co.uk/">https://www.allsaintscephprimaryschool.co.uk/</a></p>
<p>Applicants must also complete a supplementary form available from the school. This <b>must</b> be returned to the School and not the Local Authority.</p> <p><b>Oversubscription Criteria: (updated following submitted Covid-19 variation)</b></p> <ol style="list-style-type: none"> <li>1. Looked after children and children who were looked after, but ceased to be so due to adoption, residence or special guardianship order.</li> <li>2. Children with special medical or social circumstances affecting the child <b>where these needs can only be met at this school.</b></li> <li>3. Children who have a sibling in school who will still be attending school the following year</li> <li>4. Children whose parents are faithful and regular worshippers in the churches of All Saints Runcorn or Holy Trinity Runcorn *</li> <li>5. Children resident in the parish(es) of All Saints and Holy Trinity Runcorn</li> <li>6. Children whose parents are regular worshippers at a Christian church that is a member of Churches Together in Britain and Ireland*</li> <li>7. Any other child who requests a place as a preference</li> </ol> <p>Please note that attending Runcorn All Saints Nursery does not automatically guarantee admission to, nor enable automatic enrolment with the school. If there are not enough places to admit all applicants meeting any one criterion, the governors will apply the subsequent criteria, in order of priority, to all these applicants.</p> <p><i>* In the event that during the period specified for attendance at worship the church has been closed for public worship and has not provided alternative premises for that worship, the requirements of these [admissions] arrangements in relation to attendance will only apply to the period when the church or alternative premises have been available for public worship</i></p>	

<p><b>St Berteline's Church of England Primary School</b></p> <p>Age range 4 – 11 (mixed)          Anticipated number on roll: 279  <b>Published Admission Number September 2021: 44</b></p> <p>Last academic year all applications were accommodated.</p> <p><b>Published Admission Number September 2020: 44</b>  <b>Pupils Allocated for September 2020: 39</b></p> <p>Number of parents expressing each preference:          Preference 1: 36          Preference 2: 16          Preference 3: 21</p>	<p>Norton Lane, Runcorn, WA7 6QN</p> <p>Head teacher: Mrs. J Barron</p> <p>Tel: 01928 719847</p> <p>Website:  <a href="http://www.stbertelines.org.uk">www.stbertelines.org.uk</a></p>
<p>Applicants must also complete a supplementary form available from the school. This <b>must</b> be returned to the School and not the Local Authority.</p> <p><b>Oversubscription Criteria: (updated following submitted Covid-19 variation)</b></p> <ol style="list-style-type: none"> <li>1. Looked after children and previously looked after children, but ceased to be so because they were adopted (or became subject to a residence order or special guardianship order).</li> <li>2. Children who have a sibling in at the time of application and who will continue to be in school at the beginning of the year of admission.</li> </ol> <p>Once places have been allocated under criteria 1 and 2 above, the remaining places will be divided equally to be allocated under criteria 3 and 4 below. In the event of an odd number of places being available, the single odd place shall be made available for allocation under criterion 3.</p> <ol style="list-style-type: none"> <li>3. Children whose parent/parents are involved in the work and worship of any Christian Church for whom there is no nearer Church of England School*</li> <li>4. Pupils living nearest to the school</li> </ol> <p>Within criteria 3 and 4, places in each category will be allocated in order of shortest distance according to the straight-line distance measurement from the child's permanent residence to the school as measured by the Local Authority. <b>It must be emphasised that admission to the Nursery does not guarantee admission to the school.</b></p> <p><i>*In the event that during the period specified for attendance at worship the church has been closed for public worship and has not provided alternative premises for that worship, the requirements of these [admissions] arrangements in relation to attendance will only apply to the period when the church or alternative premises have been available for public worship</i></p>	

<p><b>St Mary's Church of England Primary School</b></p> <p>Age range 4 – 11 (mixed)          Anticipated number on roll: 205  <b>Published Admission Number September 2021: 35</b></p> <p>Last academic year all applications were accommodated.</p> <p><b>Published Admission Number September 2020: 35</b>  <b>Pupils Allocated for September 2020: 26</b></p> <p>Number of parents expressing each preference:          Preference 1: 24          Preference 2: 10          Preference 3: 6</p>	<p>Castlefields Avenue South,          Runcorn, WA7 2NR</p> <p>Head teacher: Mrs. R Tainsh</p> <p>Tel: 01928 565995</p> <p>Website:  <a href="http://st-marys.halton.sch.uk/Pages/Home.aspx">http://st-marys.halton.sch.uk/Pages/Home.aspx</a></p>
<p>Applicants must also complete a supplementary form available from the school. This <b>must</b> be returned to the School and not the Local Authority.</p> <p><b>Oversubscription Criteria: (updated following submitted Covid-19 variation)</b></p> <ol style="list-style-type: none"> <li>1. Looked after children and children who were looked after, but immediately after being looked after became subject to an adoption, residence or special guardianship order.</li> <li>2. Children who have a sibling already attending the school and expected to continue at the school in the year of admission.</li> <li>3. Children or their parents/guardians who are faithful and regular in the work and worship of Halton St Mary's Church or Christ Church, Castlefields or any Christian church in Runcorn as recognised by Churches Together in Britain and Ireland *</li> <li>4. Children resident within the Parish boundary (Halton Village, Castlefields, Halton Brook, The Brow). To look at a map of the Parish go to <a href="http://www.achurchnearyou.com">www.achurchnearyou.com</a>. Alternatively a Parish map is available from school.</li> <li>5. Children with special medical or social circumstances affecting the child where these needs can only be met at this school.</li> <li>6. Children resident outside the areas in criteria 4 and who live nearest the school as measured using the LA's Ordnance Survey GIS address point system.</li> </ol> <p><b>Please note that attending St Mary's Nursery does not automatically guarantee admission to, nor enable automatic enrolment with the school.</b></p> <p><i>*In the event that during the period specified for attendance at worship the church has been closed for public worship and has not provided alternative premises for that worship, the requirements of these [admissions] arrangements in relation to attendance will only apply to the period when the church or alternative premises have been available for public worship</i></p>	



## VOLUNTARY AIDED (CATHOLIC) SCHOOLS

The schools listed in this section are Voluntary Aided Catholic Primary Schools. Each school has an individual admission policy which is the responsibility of the school governors. The details below provide only a summary of the oversubscription criteria and **full details of the schools policies can be viewed on the schools' websites**, together with a copy of the school's supplementary application form (if required). The schools will advise when the supplementary information form is required.

<p><b>Our Lady Mother of the Saviour Catholic Primary School</b></p> <p>Age range 4 – 11 (mixed) Anticipated number on roll: 187 <b>Published Admission Number September 2021: 30</b></p> <p>Last academic year all applications were accommodated.</p> <p><b>Published Admission Number September 2020: 30</b> <b>Pupils Allocated for September 2020: 17</b> Number of parents expressing each preference: Preference 1: 18 Preference 2: 5 Preference 3: 9</p>	<p>Lapwing Grove, Runcorn, WA7 2TP</p> <p>Head teacher: Mrs. J Ward</p> <p>Tel: 01928 711921</p> <p>Website: <a href="http://www.ourladysruncorn.halton.sch.uk">www.ourladysruncorn.halton.sch.uk</a></p>
<p><b>Oversubscription Criteria:</b></p> <ol style="list-style-type: none"> <li>1. Catholic looked after and previously looked after children.</li> <li>2. Catholic children who are resident in the parish of The Divine saviour for whom Our Lady Mother of the Saviour is the nearest Catholic school.</li> <li>3. Other Catholic children.</li> <li>4. Other looked after and previously looked after children.</li> <li>5. Any other children.</li> </ol> <p><i>Within each of the categories listed above, the following provisions will be applied in the following order.</i></p> <p>(i) The attendance of a brother or sister at the school at the time of enrolment will increase the priority of an application within each category so that the application will be placed at the top of the category in which the application is made.</p> <p><b>A Supplementary Information Form is required for this school</b> and can be obtained from the school website or by contacting the school and requesting one. <b>This must be returned to the school directly</b> and must be submitted by 15<sup>th</sup> January 2021 (the closing date for applications).</p>	

<p><b>Our Lady of Perpetual Succour Catholic Primary School</b></p> <p>Age range 4 – 11 (mixed)          Anticipated number on roll: 209  <b>Published Admission Number September 2021: 30</b></p> <p>Last academic year the school was oversubscribed</p> <p><b>Published Admission Number September 2020: 30</b>  <b>Appeals Registered: 4</b>  <b>Upheld Appeals: 0</b>  <b>Pupils Allocated for September 2020: 30</b></p> <p>Number of parents expressing each preference:          Preference 1: 41          Preference 2: 33          Preference 3: 14</p>	<p>Clinton View, Widnes,          WA8 8JW</p> <p>Head teacher: Mrs. P McGuffie</p> <p>Tel: 0151 4246130</p> <p>Website:  <a href="http://www.olpsprimary.co.uk">www.olpsprimary.co.uk</a></p> <p><b>National Offer Day 2020</b>  <b>Position:</b>          Last place criteria: Criteria 8          Distance last place: 101.24 metres</p>
<p><b>Oversubscription Criteria:</b></p> <ol style="list-style-type: none"> <li>1. Looked after children and previously looked after children. This includes children who appear to have been in state care outside of England and ceased to be in state care as a result of being adopted.</li> <li>2. Baptised Catholic children who have a sibling in the school at the time of admission</li> <li>3. Baptised Catholic children resident in the parish of St Wilfrid, the part of this parish formerly referred to as the parish of Our Lady of Perpetual Succour</li> <li>4. Other Baptised Catholic children</li> <li>5. Other children who have a sibling at the school at the time of admission.</li> <li>6. Children from other Christian denominations. Proof of Baptism in the form of a Baptismal Certificate or confirmation in writing that the applicant is a member of their Faith community from an appropriate Minister of Religion is required.</li> <li>7. Children of other faiths. An appropriate Faith Leader would need to confirm in writing that the applicant is a member of their faith group.</li> <li>8. Other children</li> </ol> <p>If it is not possible to offer places for all applicants within any criteria above, then places will be allocated to the children who live nearest to the school. Distance will be measured by the LA using the LA's Ordnance Survey GIS address point system which measures from the address point of the child's permanent address to the address point of the school in metres.</p> <p>The school's admissions policy <b>does not</b> refer to a supplementary information form.</p>	

<p><b>St Basil's Catholic Primary School</b></p> <p>Age range 4 – 11 (mixed)          Anticipated number on roll: 338  <b>Published Admission Number September 2021: 60</b></p> <p>Last academic year all applications were accommodated.</p> <p><b>Published Admission Number September 2020: 60</b>  <b>Pupils Allocated for September 2020: 35</b>          Number of parents expressing each preference:          Preference 1: 21          Preference 2: 19          Preference 3: 11</p>	<p>Hough Green Road, Widnes,          WA8 4SZ</p> <p>Head teacher: Mrs. A Sheppard</p> <p>Tel: 0151 4247839</p> <p>Website:  <a href="http://www.stbasilsprimary.halton.sch.uk">www.stbasilsprimary.halton.sch.uk</a></p>
<p><b>Oversubscription Criteria:</b></p> <ol style="list-style-type: none"> <li>1. Looked after children and previously looked after children. This includes children who appear to have been in state care outside of England and ceased to be in state care as a result of being adopted.</li> <li>2. Baptised Catholic children who have a sibling in the school at the time of admission</li> <li>3. Baptised Catholic children resident in the parish of St Wilfrid, the part of this parish formerly referred to as the parish of St Basil</li> <li>4. Other baptised Catholic children</li> <li>5. Children who are other than Catholic and have a sibling in the school at the time of admission</li> <li>6. Children from other Christian denominations. Proof of Baptism in the form of a Baptismal Certificate or confirmation in writing that the applicant is a member of their Faith community from an appropriate Minister of Religion is required.</li> <li>7. Children of other faiths. An appropriate Faith Leader would need to confirm in writing that the applicant is a member of their faith group.</li> <li>8. Other children</li> </ol> <p>If it is not possible to offer places for all applicants within any criteria above, then places will be allocated to the children who live nearest to the school. Distance will be measured by the LA using the LA's Ordnance Survey GIS address point system which measures from the address point of the child's permanent address to the address point of the school in metres.</p> <p>The school's admissions policy <b>does not</b> refer to a supplementary information form.</p>	

<p><b>St Bede's Catholic Infant School</b></p> <p>Age range 4 – 8 (mixed)  Anticipated number on roll: 239  <b>Published Admission Number September 2021: 75</b></p> <p>Last academic year the school was oversubscribed.</p> <p><b>Published Admission Number September 2020: 75</b>  <b>Appeals Registered: 3</b>  <b>Upheld Appeals: 2</b>  <b>Pupils Allocated for September 2020: 77</b></p> <p>Number of parents expressing each preference:  Preference 1: 83  Preference 2: 70  Preference 3: 39</p>	<p>Leigh Avenue, Widnes, WA8 6EL</p> <p>Head teacher: Miss J Coughlan</p> <p>Tel: 0151 4243112</p> <p>Website:  <a href="http://www.stbedesinfants.co.uk">www.stbedesinfants.co.uk</a></p> <p><b>National Offer Day 2020</b>  <b>Position:</b>  Last place criteria: Criteria 8  Distance last place: 630.18 metres</p>
<p><b>Oversubscription Criteria:</b></p> <ol style="list-style-type: none"> <li>1. Looked after children and previously looked after children. This includes children who appear to have been in state care outside of England and ceased to be in state care as a result of being adopted. Baptised Catholic children who have a sibling in St Bede's Catholic Infant or St Bede's Catholic Junior Schools at the time of admission.</li> <li>2. Baptised Catholic children who have a sibling in the Infant or Junior School at the time of admission.</li> <li>3. Baptised Catholic children resident in the parish of St. Wilfrid, the part of this parish formerly referred to as the parish of Bede and St. Raphael.</li> <li>4. Other baptised Catholic children.</li> <li>5. Other children who have a sibling in St Bede's Catholic Infant or St Bede's Catholic Junior Schools at the time of admission.</li> <li>6. Children from other Christian denominations. Proof of Baptism in the form of a Baptismal Certificate or confirmation in writing that the applicant is a member of their Faith community from an appropriate Minister of Religion is required.</li> <li>7. Children of other faiths. An appropriate Faith Leader would need to confirm in writing that the applicant is a member of their faith group.</li> <li>8. Other Children.</li> </ol> <p>If it is not possible to offer places for all applicants within any criteria above, then places will be allocated to the children who live nearest to the school. Distance will be measured by the LA using the LA's Ordnance Survey GIS address point system which measures from the address point of the child's permanent address to the address point of the school in metres.</p> <p>The school's admissions policy <b>does not</b> refer to a supplementary information form.</p>	

<p><b>St Bede's Catholic Junior School</b></p> <p>Age range 8 – 11 (mixed)          Anticipated number on roll: 309  <b>Published Admission Number September 2021: 75</b></p> <p>Last academic year the school was oversubscribed</p> <p><b>Published Admission Number September 2020: 75</b>  <b>Appeals Registered: 7</b>  <b>Upheld Appeals: 7</b>  <b>Pupils Allocated for September 2020: 82</b></p>	<p>Leigh Avenue, Widnes, WA8 6EL</p> <p>Head teacher: Mrs F Tiernan</p> <p>Tel: 0151 4243386</p> <p>Website:  <a href="http://www.stbedesjuniorschool.co.uk">www.stbedesjuniorschool.co.uk</a></p> <p><b>National Offer Day 2020</b>  <b>Position:</b>          Last place criteria: Criteria 4          Distance last place: metres</p>
<p><b>Oversubscription Criteria:</b></p> <ol style="list-style-type: none"> <li>1. Looked after children and previously looked after children. This includes children who appear to have been in state care outside of England and ceased to be in state care as a result of being adopted.</li> <li>2. Baptised Catholic children who have a sibling in St Bede's Catholic Infant or St Bede's Catholic Junior Schools at the time of admission.</li> <li>3. Baptised Catholic children resident in the parish of St. Wilfrid, the part of this parish formerly referred to as the parish of Bede and St. Raphael.</li> <li>4. Other baptised Catholic children.</li> <li>5. Other children who have a sibling in St Bede's Catholic Infant or St Bede's Catholic Junior Schools at the time of admission.</li> <li>6. Children from other Christian denominations. Proof of Baptism in the form of a Baptismal Certificate or confirmation in writing that the applicant is a member of their Faith community from an appropriate Minister of Religion is required.</li> <li>7. Children of other faiths. An appropriate Faith Leader would need to confirm in writing that the applicant is a member of their faith group.</li> <li>8. Other Children.</li> </ol> <p>If it is not possible to offer places for all applicants within any criteria above, then places will be allocated to the children who live nearest to the school. Distance will be measured by the LA using the LA's Ordnance Survey GIS address point system which measures from the address point of the child's permanent address to the address point of the school in metres.</p> <p>The school's admissions policy <b>does not</b> refer to a supplementary information form.</p>	

<p><b>St Clement's Catholic Primary School</b></p> <p>Age range 4 – 11 (mixed)          Anticipated number on roll: 206  <b>Published Admission Number September 2021: 30</b></p> <p>Last academic year all applications were accommodated.</p> <p><b>Published Admission Number September 2020: 30</b>  <b>Pupils Allocated for September 2020: 29</b></p> <p>Number of parents expressing each preference:          Preference 1: 26          Preference 2: 23          Preference 3: 9</p>	<p>Oxford Road, Runcorn,          WA7 4NX</p> <p>Head teacher: Mr M Parker</p> <p>Tel: 01928 572129</p> <p>Website:  <a href="http://www.st-clements.halton.sch.uk">www.st-clements.halton.sch.uk</a></p>
<p><b>Oversubscription Criteria:</b></p> <ol style="list-style-type: none"> <li>1. Looked after and previously looked after children.</li> <li>2. Catholic children who are resident in the St. Clement's designated area of the parish of St. Maximilian Kolbe. – <i>(Please refer to St Clement's full Admission Policy)</i></li> <li>3. Catholic children resident in the remainder of St. Maximilian Kolbe Parish.</li> <li>4. Other Catholic children</li> <li>5. Catechumens and members of an Eastern Christian Church.</li> <li>6. Any other children</li> </ol> <p><i>Within each of the categories listed above, the following provisions will be applied in the following order.</i></p> <ol style="list-style-type: none"> <li>(i) The attendance of a brother or sister at the school at the time of enrolment will increase the priority of an application within each category so that the application will be placed at the top of the category in which the application is made after children in (1) above.</li> <li>(ii) The children of staff will be given increased priority within each category so that the application will be placed at the top of the category in which the application is made after children in (1) above.</li> </ol> <p>Priority will be given to children living closest to the school determined by the shortest distance. The address to be used in measuring distance for the purpose of allocating school places will be the child's permanent address at the closing date of 15th January 2021. Distance will be measured by Halton LA using the LAs Ordnance Survey GIS address point system, which measures from the address point of the child's permanent address to the address point of the school in metres.</p> <p><b>A Supplementary Information Form is required for this school</b> and can be obtained from the school website or by contacting the school and requesting one. <b>This must be returned to the school directly</b> and must be submitted by 15<sup>th</sup> January 2021 (the closing date for applications).</p>	

<p><b>St Edward's Catholic Primary School</b></p> <p>Age range 4 – 11 (mixed)          Anticipated number on roll: 129  <b>Published Admission Number September 2021: 20</b></p> <p>Last academic year the school was oversubscribed</p> <p><b>Published Admission Number September 2020: 20</b>  <b>Pupils Allocated for September 2020: 20</b>          Number of parents expressing each preference:          Preference 1: 14          Preference 2: 13          Preference 3: 5</p>	<p>Wivern Place, Runcorn,          WA7 1RZ</p> <p>Head teacher: Mrs. K O'Hare</p> <p>Tel: 01928 572317</p> <p>Website:  <a href="http://www.stedwardscatholicprimaryschool.co.uk">www.stedwardscatholicprimaryschool.co.uk</a></p>
<p><b>Oversubscription Criteria:</b></p> <ol style="list-style-type: none"> <li>1. Looked after and previously looked after children.</li> <li>2. Catholic children resident in the designated area of St Maximilian Kolbe's Parish. North of a line from the Boston Avenue crossing of the Spur Road in a westward direction to the Bridgewater House, on the River Mersey.</li> <li>3. Catholic children resident in the remainder of St Maximilian Kolbe's Parish.</li> <li>4. Other Catholic children.</li> <li>5. Catechumens and members of an Eastern Christian Church.</li> <li>6. Children of other Christian denominations whose membership is evidenced by a minister of religion.</li> <li>7. Children of other faiths whose membership is evidenced by a religious leader.</li> <li>8. Any other children.</li> </ol> <p><i>Within each of the categories listed above, the following provisions will be applied in the following order.</i></p> <ol style="list-style-type: none"> <li>(i) The attendance of a brother or sister at the school at the time of enrolment will increase the priority of an application within each category so that the application will be placed at the top of the category in which the application is made after children in (1) above.</li> <li>(ii) The children of staff will be given increased priority within each category so that the application will be placed at the top of the category in which the application is made after children in (1) above.</li> </ol> <p>Priority will be given to children living closest to the school determined by the shortest distance. The address to be used in measuring distance for the purpose of allocating school places will be the child's permanent address at the closing date of 15th January 2021. Distance will be measured by Halton LA using the LAs Ordnance Survey GIS address point system, which measures from the address point of the child's permanent address to the address point of the school in metres.</p> <p><b>A Supplementary Information Form is required for this school</b> and can be obtained from the school website or by contacting the school and requesting one. <b>This must be returned to the school directly</b> and must be submitted by 15<sup>th</sup> January 2021 (the closing date for applications).</p>	



<p><b>St Gerard's Roman Catholic Primary &amp; Nursery School</b></p> <p>Age range 4 – 11 (mixed)          Anticipated number on roll: 204  <b>Published Admission Number September 2021: 30</b></p> <p>Last academic year all applications were accommodated.</p> <p><b>Published Admission Number September 2020: 30</b>  <b>Pupils Allocated for September 2020: 30</b></p> <p>Number of parents expressing each preference:          Preference 1: 29          Preference 2: 10          Preference 3: 8</p>	<p>Lugsdale Road, Widnes,          WA8 6DD</p> <p>Head teacher: Mr. K Landrum</p> <p>Tel: 0151 4242879</p> <p>Website:  <a href="http://www.st-gerards.halton.sch.uk">www.st-gerards.halton.sch.uk</a></p>
<p><b>Oversubscription Criteria:</b></p> <ol style="list-style-type: none"> <li>1. Looked after children and previously looked after children. This includes children who appear to have been in state care outside of England and ceased to be in state care as a result of being adopted.</li> <li>2. Baptised Catholic children who have a sibling in the school at the time of admission.</li> <li>3. Baptised Catholic children resident in the parish of St Wilfrid, the part of the parish formerly referred to as St Marie.</li> <li>4. Other baptised Catholic children.</li> <li>5. Other children who have a sibling in the school at the time of admission.</li> <li>6. Children from other Christian denominations. Proof of Baptism in the form of a Baptismal Certificate or confirmation in writing that the applicant is a member of their Faith community from an appropriate Minister of Religion is required.</li> <li>7. Children of other faiths. An appropriate Faith Leader would need to confirm in writing that the applicant is a member of their faith group.</li> <li>8. Other children.</li> </ol> <p>If it is not possible to offer places for all applicants within any criteria above then places will be allocated to the children who live nearest to the school. Distance will be measured by the LA using the LA's Ordnance Survey GIS address point system which measures from the address point of the child's permanent address to the address point of the school in metres.</p> <p>The school's admissions policy <b>does not</b> refer to a supplementary information form.</p>	

<p><b>St John Fisher Catholic Primary School</b></p> <p>Age range 4 – 11 (mixed)          Anticipated number on roll: 205  <b>Published Admission Number September 2021: 30</b></p> <p>Last academic year the school was oversubscribed.</p> <p><b>Published Admission Number September 2020: 30</b>  <b>Appeals Registered: 2</b>  <b>Upheld Appeals: 0</b>  <b>Pupils Allocated for September 2020: 30</b></p> <p>Number of parents expressing each preference:          Preference 1: 39          Preference 2: 13          Preference 3: 10</p>	<p>Edward Street, Widnes,          WA8 0BW</p> <p>Head teacher: Mrs N Hegarty</p> <p>Tel: 0151 4247794</p> <p>Website:  <a href="http://www.st-johnfisherprimary.co.uk/">www.st-johnfisherprimary.co.uk/</a></p> <p><b>National Offer Day 2020</b>  <b>Position:</b>          Last place criteria: Criteria 5          Distance last place: 636.27 metres</p>
<p><b>Oversubscription Criteria:</b></p> <ol style="list-style-type: none"> <li>1. Looked after children and previously looked after children. This includes children who appear to have been in state care outside of England and ceased to be in state care as a result of being adopted.</li> <li>2. Baptised Catholic children who have a sibling in the school at the time of admission.</li> <li>3. Baptised Catholic children resident in the parish of St Wilfrid, the part of the parish formerly referred to as St John Fisher.</li> <li>4. Other baptised Catholic children.</li> <li>5. Other children who have a sibling in the school at the time of admission.</li> <li>6. Children from other Christian denominations. Proof of Baptism in the form of a Baptismal Certificate or confirmation in writing that the applicant is a member of their Faith community from an appropriate Minister of Religion is required.</li> <li>7. Children of other faiths. An appropriate Faith Leader would need to confirm in writing that the applicant is a member of their faith group.</li> <li>8. Other children.</li> </ol> <p>If it is not possible to offer places for all applicants within any criteria above then places will be allocated to the children who live nearest to the school. Distance will be measured by the LA using the LA's Ordnance Survey GIS address point system which measures from the address point of the child's permanent address to the address point of the school in metres.</p> <p>The school's admissions policy <b>does not</b> refer to a supplementary information form.</p>	

<p><b>St Martin's Catholic Primary School</b></p> <p>Age range 4 – 11 (mixed)  Anticipated number on roll: 197  <b>Published Admission Number September 2021: 30</b></p> <p>Last academic year all applications were accommodated</p> <p><b>Published Admission Number September 2020: 30</b>  <b>Pupils Allocated for September 2020: 19</b></p> <p>Number of parents expressing each preference:  Preference 1: 20  Preference 2: 13  Preference 3: 7</p>	<p>St Martin's Lane, Runcorn,  WA7 6HZ</p> <p>Head teacher: Mr. P Hallman</p> <p>Tel: 01928 711207</p> <p>Website:  <a href="http://st-martins.halton.sch.uk/Pages/home.aspx">http://st-martins.halton.sch.uk/Pages/home.aspx</a></p>
<p><b>Oversubscription Criteria:</b></p> <ol style="list-style-type: none"> <li>1. Catholic looked after and previously looked after children.</li> <li>2. Catholic children who are resident in the parish(es) of St Martin's.</li> <li>3. Catholic children who are resident in the parish of Divine Saviour [for whom St Martin's is the nearest Catholic school].</li> <li>4. Other Catholic children.</li> <li>5. Other looked after and previously looked after children.</li> <li>6. Catechumens and members of an Eastern Christian Church.</li> <li>7. Children of other Christian denominations whose membership is evidenced by a minister of religion.</li> <li>8. Children of other faiths whose membership is evidenced by a religious leader.</li> <li>9. Any other children.</li> </ol> <p><i>Within each of the categories listed above, the following provisions will be applied in the following order.</i></p> <ol style="list-style-type: none"> <li>(i) The attendance of a brother or sister at the school at the time of enrolment will increase the priority of an application within each category so that the application will be placed at the top of the category in which the application is made after children in (1) above.</li> <li>(ii) The children of staff will be given increased priority within each category so that the application will be placed at the top of the category in which the application is made after children in (1) above.</li> </ol> <p>Priority will be given to children living closest to the school determined by the shortest distance. The address to be used in measuring distance for the purpose of allocating school places will be the child's permanent address at the closing date of 15th January 2021. Distance will be measured by Halton LA using the LAs Ordnance Survey GIS address point system, which measures from the address point of the child's permanent address to the address point of the school in metres.</p> <p><b>A Supplementary Information Form is required for this school</b> and can be obtained from the school website or by contacting the school and requesting one. <b>This must be returned to the school directly</b> and must be submitted by 15<sup>th</sup> January 2021 (the closing date for applications).</p>	

<p><b>St Michael's Catholic Primary School</b></p> <p>Age range 4 – 11 (mixed)          Anticipated number on roll: 251  <b>Published Admission Number September 2021: 30</b></p> <p>Last academic year the school was oversubscribed</p> <p><b>Published Admission Number September 2020: 30</b>  <b>Appeals Registered: 10</b>  <b>Upheld Appeals: 2</b>  <b>Pupils Allocated for September 2020: 41</b> (the school admitted 10 further pupils from the waiting list due to exceptional circumstances)</p> <p>Number of parents expressing each preference:          Preference 1: 48          Preference 2: 33          Preference 3: 17</p>	<p>St Michael's Road, Widnes,          WA8 8TD</p> <p>Head teacher: Mr. P Loughran</p> <p>Tel: 0151 4244468</p> <p>Website:  <a href="http://www.stmichaelscatholicprimaryschool.co.uk">www.stmichaelscatholicprimaryschool.co.uk</a></p> <p><b>National Offer Day 2020</b>  <b>Position:</b>          Last place criteria: Criteria 4          Distance last place: 1464.48 metres</p>
<p><b>Oversubscription Criteria:</b></p> <ol style="list-style-type: none"> <li>1. Looked After Children and previously Looked After Children.</li> <li>2. Baptised Catholic children who have a sibling at the school at the time of admission.</li> <li>3. Baptised Catholic children living in the Parish of St Wilfred, the part of the parish formerly known as St Michael's</li> <li>4. Other baptised Catholic children</li> <li>5. Other children who have a sibling at the school at the time of admission.</li> <li>6. Children from other Christian denominations. Proof of Baptism in form of Baptismal Certificate or confirmation in writing that the applicant is a member of their Faith community from an appropriate Minister of Religion is required.</li> <li>7. Children of other faiths. An appropriate Faith Leader would need to confirm in writing that the applicant is a member of their faith group.</li> <li>8. Other children</li> </ol> <p>If it is not possible to offer places for all applicants within any criteria above then places will be allocated to the children who live nearest to the school. Distance will be measured by the LA using the LA's Ordnance Survey GIS address point system which measures from the address point of the child's permanent address to the address point of the school in metres.</p> <p>The school's admissions policy <b>does not</b> refer to a supplementary information form.</p>	

<p><b>The Holy Spirit Catholic Primary School</b></p> <p>Age range 4 – 11 (mixed)  Anticipated number on roll: 108  <b>Published Admission Number September 2020: 20</b></p> <p>Last academic year all applications were accommodated.</p> <p><b>Published Admission Number September 2020: 20</b>  <b>Pupils Allocated for September 2020: 9</b></p> <p>Number of parents expressing each preference:  Preference 1: 9  Preference 2: 11  Preference 3: 1</p>	<p>Cotterill, Halton Brook, Runcorn,  WA7 2NL</p> <p>Head teacher: Mrs L Connolly  (Acting Headteacher)</p> <p>Tel: 01928 563148</p> <p>Website:  <a href="http://www.holyspiritruncorn.co.uk">www.holyspiritruncorn.co.uk</a></p>
<p><b>Oversubscription Criteria:</b></p> <ol style="list-style-type: none"> <li>1. Catholic looked after and previously looked after children.</li> <li>2. Catholic children who are resident in the parish The Holy Spirit</li> <li>3. Catholic children who are resident in the parish of St Edward's for whom The Holy Spirit is the nearest Catholic school</li> <li>4. Other Catholic children.</li> <li>5. Other looked after and previously looked after children.</li> <li>6. Catechumens and members of an Eastern Christian Church.</li> <li>7. Children of other Christian denominations whose membership is evidenced by a minister of religion.</li> <li>8. Children of other faiths whose membership is evidenced by a religious leader.</li> <li>9. Any other children.</li> </ol> <p><i>Within each of the categories listed above, the following provisions will be applied in the following order:</i></p> <ol style="list-style-type: none"> <li>(i) The attendance of a brother or sister at the school at the time of enrolment will increase the priority of an application within each category so that the application will be placed at the top of the category in which the application is made after children in (1) above.</li> <li>(ii) The children of staff will be given increased priority within each category so that the application will be placed at the top of the category in which the application is made after children in (1) above.</li> </ol> <p>Priority will be given to children living closest to the school determined by the shortest distance. Distances are calculated using the local authority's computerised measuring system on the following basis (Distance will be measured from the geographical reference point of the home address to the geographical reference point for the school).</p> <p><b>A Supplementary Information Form is required for this school</b> and can be obtained from the school website or by contacting the school and requesting one. <b>This must be returned to the school directly</b> and must be submitted by 15<sup>th</sup> January 2021 (the closing date for applications).</p>	

## VOLUNTARY AIDED (CATHOLIC OR CHURCH OF ENGLAND) ACADEMY

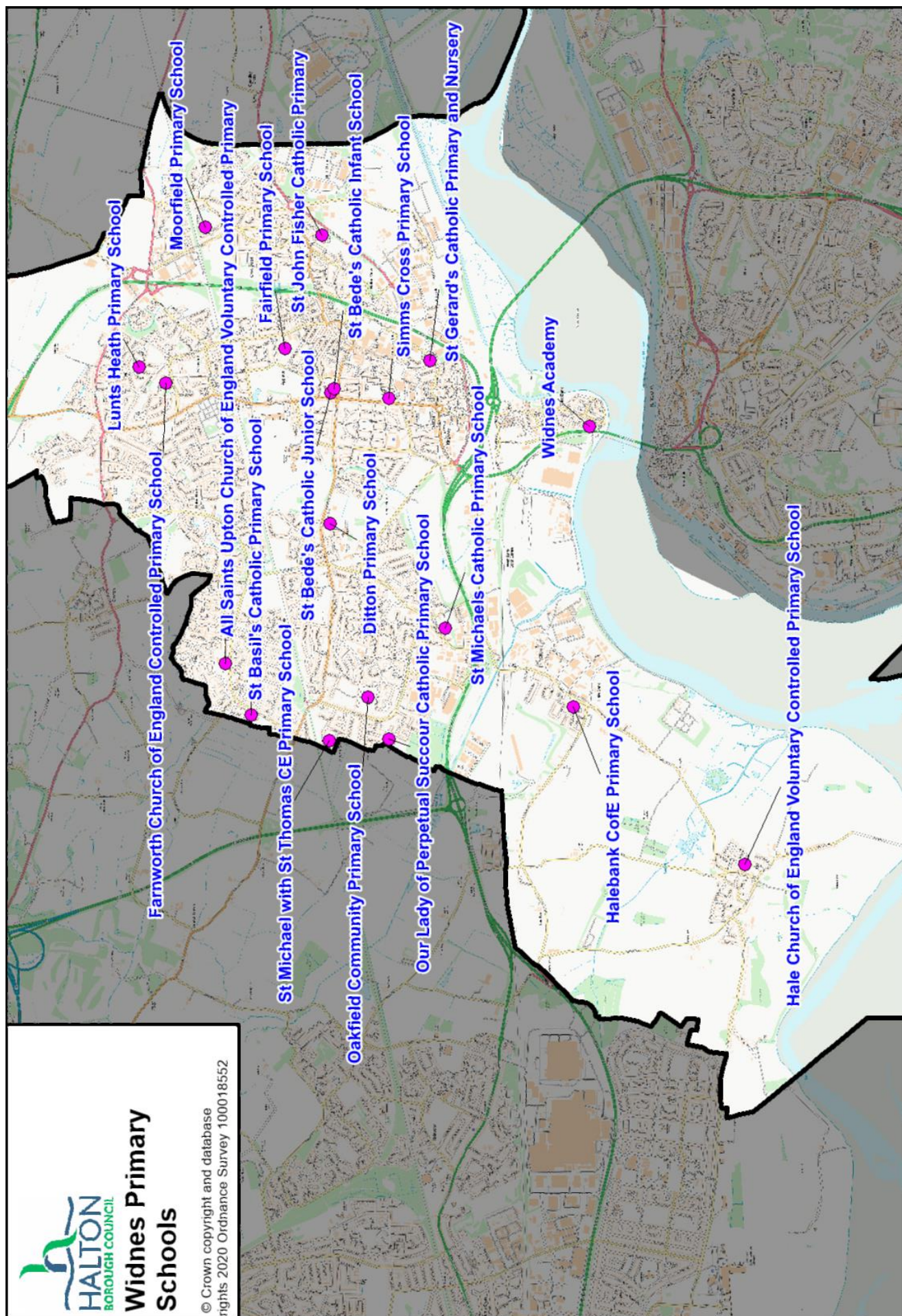
The schools listed in this section are Voluntary Aided Catholic or Church of England Academy Schools. Each school has an individual admission policy which is the responsibility of the school governors/trust. The details below provide only a summary of the oversubscription criteria and **full details of the schools policies can be viewed on the schools' websites.**

<p><b>St Augustine's Catholic Primary School</b></p> <p>Age range 4 – 11 (mixed) Anticipated number on roll: 111 <b>Published Admission Number September 2021: 25</b></p> <p>Last academic year all applications were accommodated.</p> <p><b>Published Admission Number September 2020: 25</b> <b>Pupils Allocated for September 2020: 21</b> Number of parents expressing each preference: Preference 1: 21 Preference 2: 7 Preference 3: 8</p>	<p>Nigel Walk, Runcorn, WA7 2JJ</p> <p>Head teacher: Mrs N Sothern</p> <p>Tel: 01928 568936</p> <p>Website: <a href="http://www.st-augustines.halton.sch.uk">www.st-augustines.halton.sch.uk</a></p>
<p><b>Oversubscription Criteria:</b></p> <ol style="list-style-type: none"> <li>1. Catholic looked after and previously looked after children.</li> <li>2. Catholic children who are resident in the parish of The Divine Saviour for whom St Augustine's is the nearest Catholic school.</li> <li>3. Catholic children who are resident in the parish of The Divine Saviour</li> <li>4. Other Catholic children.</li> <li>5. Other looked after and previously looked after children.</li> <li>6. Catechumens and members of an Eastern Christian Church.</li> <li>7. Children of other Christian denominations whose membership is evidenced by a minister of religion.</li> <li>8. Children of other faiths whose membership is evidenced by a religious leader.</li> <li>9. Any other children.</li> </ol> <p><i>Within each of the categories listed above, the following provisions will be applied in the following order.</i></p> <ol style="list-style-type: none"> <li>(i) The attendance of a brother or sister at the school at the time of enrolment will increase the priority of an application within each category so that the application will be placed at the top of the category in which the application is made after children in (1) above</li> <li>(ii) The children of staff will be given increased priority within each category so that the application will be placed at the top of the category in which the application is made after children in (1) above</li> </ol> <p>Priority will be given to children living closest to the school determined by the shortest distance. Distances are calculated using the local authority's computerised measuring system on the following basis (Distance will be measured in a straight line from the geographical reference point of the home address to the geographical reference point for the school).</p> <p><b>A Supplementary Information Form is required for this school</b> and can be obtained from the school website or by contacting the school and requesting one. <b>This must be returned to the school directly</b> and must be submitted by 15<sup>th</sup> January 2021 (the closing date for applications).</p>	

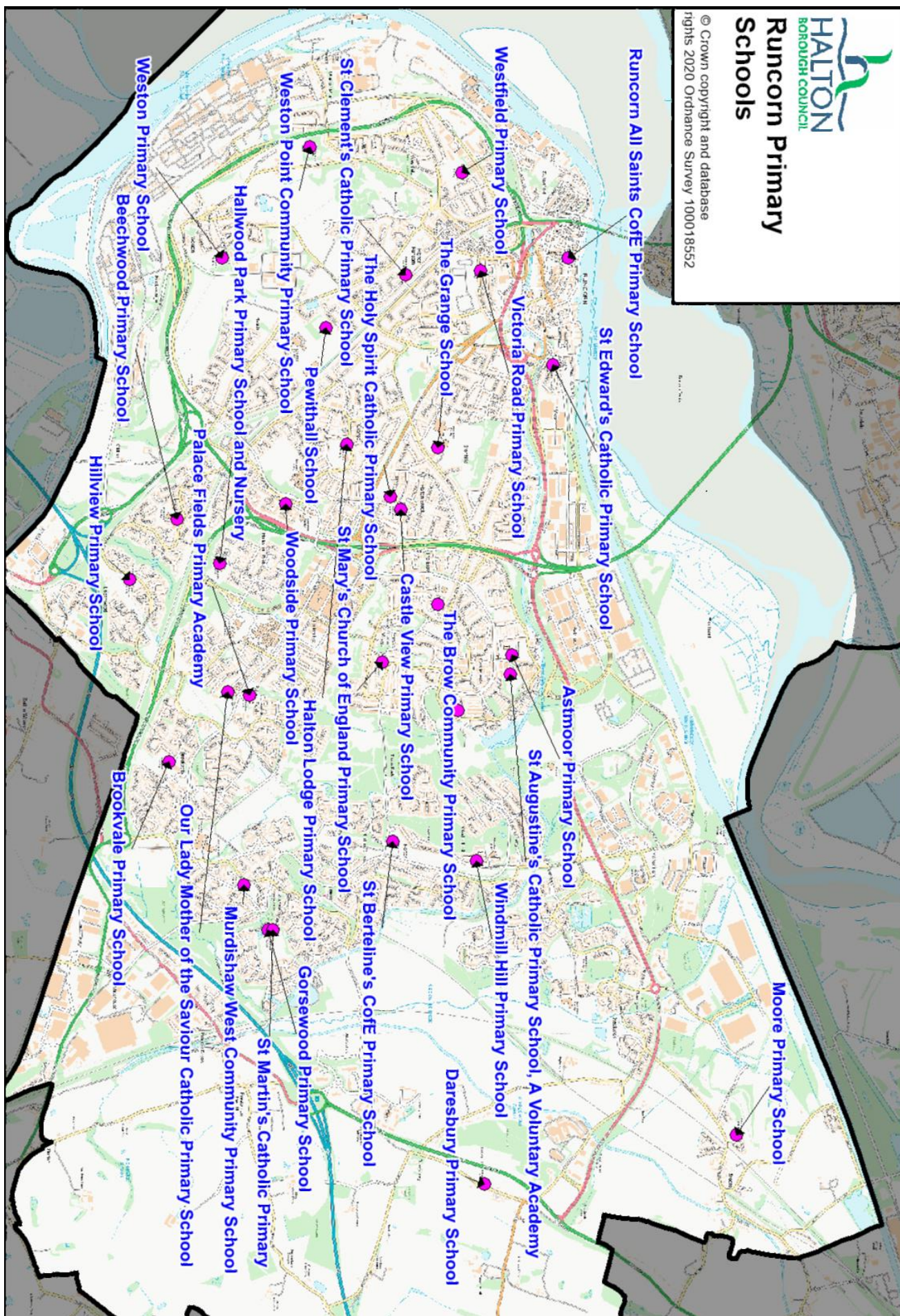


<p><b>St Michael with St Thomas CE Primary School</b></p> <p>Age range 4 – 11 (mixed)          Anticipated number on roll: 202  <b>Published Admission Number September 2021: 30</b></p> <p><b>The school was oversubscribed for the 2020 intake.</b></p> <p><b>Published Admission Number September 2020: 30</b>  <b>Appeals Registered: 1</b>  <b>Upheld Appeals: 0</b>  <b>Pupils Allocated for September 2020: 30</b></p> <p>Number of parents expressing each preference:          Preference 1: 32          Preference 2: 13          Preference 3: 8</p>	<p>Spinney Avenue, Widnes,          WA8 8LD</p> <p>Head teacher: Ms M Slingsby</p> <p>Tel: 0151 424 4234</p> <p>Website:  <a href="https://www.smwst.co.uk">https://www.smwst.co.uk</a></p> <p><b>National Offer Day 2020</b>  <b>Position:</b>          Last place criteria: Distance          Distance last place: 2322.03 metres</p>
<p><b>Oversubscription Criteria: (updated following submitted Covid-19 variation)</b></p> <ol style="list-style-type: none"> <li>1. Looked after children and children who were previously looked after but immediately after being looked after became subject to adoption, a child arrangements order, or special guardianship order. Children who appear to the Directors of the Trust to have been in state care outside of England and ceased to be in state care as a result of being adopted.</li> <li>2. Children who have a brother or sister at the school at the time of likely admission. This includes full, half or stepbrothers and sisters, adopted and foster brothers and sisters or a child of the parent/carer's partner, and in every case who is living at the same address and is part of the same family unit.</li> <li>3. Children whose parent(s) regularly attend a Church of England church. (A parent is any person who has parental responsibility or care of the child.) In the event that during the period specified for attendance at worship the church has been closed for public worship and has not provided alternative premises for that worship, the requirements of these admissions arrangements in relation to attendance will only apply to the period when the church or alternative premises have been available for public worship.</li> <li>4. Children whose parent(s) regularly attend another Christian church that is a member of Churches Together in Britain and Ireland (<a href="http://www.ctbi.org.uk">www.ctbi.org.uk</a>) or a place of worship which is associated with the UK Interfaith Network (<a href="http://www.interfaith.org.uk">www.interfaith.org.uk</a>). (A parent is any person who has parental responsibility or care of the child.) In the event that during the period specified for attendance at worship the church has been closed for public worship and has not provided alternative premises for that worship, the requirements of these admissions arrangements in relation to attendance will only apply to the period when the church or alternative premises have been available for public worship.</li> <li>5. Children whose parents express a preference for a place at the school.</li> </ol> <p>In the event of oversubscription within any of the criteria above, priority will be given to children whose family home is nearest the school. Distance will be measured in a straight line from home to school using the local authority Geographical Information System (GIS).</p> <p>The school's admissions policy <b>does not</b> refer to a supplementary information form but the school may request a letter from the relevant Church leader to support criteria 3 or 4.</p>	











## OTHER INFORMATION

### ADMISSION APPEALS PROCEDURE

Parents/carers who are not offered a place at any of their preferred schools have a right of appeal to an independent appeals panel under section 94 of the School Standards & Framework Act 1998. Appeals must be submitted in writing but parents/carers have the right to present their case to the panel in person. The Chairman of the appeal panel will be a lay person having no connection with the LA. Other members of the panel will be suitably experienced persons.

The Education Act 1996 as amended by the School Standards & Framework Act 1998 requires that from September 2001 no 5, 6 or 7 year old in an infant class at a maintained school should be in a class of more than 30 pupils. Admission Authorities are not required to admit a child to an infant class where to do so would conflict with keeping to the statutory class size limits. Therefore if the preference expressed is for a primary school that falls into this category and it is over-subscribed, parents will have the right of appeal to an independent appeals panel, but an appeals panel can only uphold this appeal if it is satisfied that:

- a) The decision was not one which a reasonable admission authority/governing body would make in the circumstances of the case, or
- b) That the child would have been offered a place if the admission arrangements had been properly implemented.

This means that unless the appeals panel agrees to either of the above, admission will be refused. The LA will then advise parents where there are places still available, and parents will then be asked to submit their preference.

Applications for admission to Aided Church schools will be referred to the head teacher and Admissions Committee of the governing body of the school concerned. If the application is unsuccessful, parents will be notified of their statutory right of appeal. The decisions of independent appeals panels are binding on the LA and on the school's governing body.

There are different appeal arrangements for pupils with a statement of special educational needs.

#### How to appeal

If you wish to appeal against a decision not to admit your child to a particular community, academy, voluntary controlled or voluntary aided primary school, you should contact the School Admissions by email [schooladmissions@halton.gov.uk](mailto:schooladmissions@halton.gov.uk) who will provide you with an appeal form. You should then return your appeal to [schooladmissions@halton.gov.uk](mailto:schooladmissions@halton.gov.uk) or to:

**School Admissions, PO Box 317, Runcorn, WA7 9BZ**

In general, the following arrangements will be made for all appeals:

- At least 10 days prior to the hearing, the clerk will notify you of the time, date and location of your appeal.
- Approximately 7 days before the appeal you will receive an agenda and supporting paperwork
- The appeal will be heard before an independent panel who will have a copy of the appeal and all evidence submitted by you
- You will be notified in writing of the appeal panels decision and the grounds upon which it was made

The decision of the appeal panel is binding on all parties.

## IN-YEAR APPLICATIONS AND TRANSFERS – PRIMARY SCHOOLS

Applications made outside the normal admissions round (in-year admissions) should be made directly to the school(s) concerned. You can apply for a place for your child at any time and to any school. The [Primary In-Year application form](#) will be available from any Halton School, or from the Local Authority online at [www.halton.gov.uk/schooladmissions](http://www.halton.gov.uk/schooladmissions) and following the **Change of School** link.

Halton residents will be asked to complete an in year application form which will be considered under in year procedures as described below. If you live outside Halton you should contact your home authority.

### General Advice for In Year Applications

Parents/carers of children who are already in a school who are seeking to move to another school for reasons other than a house move are **strongly advised** to meet and discuss the move with both the current school and the proposed admitting school before completing an application form. Please bear in mind that other schools may be full and that the upheaval may damage your child's progress.

**If you decide to move your child, it is essential that you get a place at a new school before he or she leaves his or her current school.**

### Applying for an In-Year place

Halton residents should complete the in-year application form and **return the completed in-year application to the preference school**. Do not return your application form to the council. A place will then be considered to be available at the preferred school if the number on roll within the year group is below the published admission number and the child's application does not need to be referred under the locally-agreed Fair Access Protocol.

### Halton Local Authority Primary Fair Access Protocol

The Fair Access Protocol concerns **Halton-resident** children and young people of compulsory school age who have difficulty securing a school place. A full copy of the [Primary In-Year Fair Access Protocol](#) can be found online by visiting [www.halton.gov.uk/schooladmissions](http://www.halton.gov.uk/schooladmissions) and following the **Change of School** link.

### Application outcomes

The preference school should notify you in writing of the outcome of the In-Year application within 10 school days. For Halton-resident families there are three possible outcomes, and you will be advised either:

- That a place can be offered and what steps to take next to secure a start date for your child;
- That a place cannot be offered and that you are entitled to the right of appeal. Parents/carers wishing to appeal for an in-year place can appeal via the appeals procedure outlined on page 49.
- That your child's application has been referred under the In-Year Fair Access Protocol and you will be provided with the details of that Panel meeting (see page 50).

**If you are seeking admission to a school in another authority then you must contact the relevant authority for details on how to apply for a school place.**

## INFANT TO JUNIOR SCHOOL TRANSFER

St Bede's Catholic Infant and Junior Schools, Widnes, are **two separate schools**. Although the majority of the children who have attended the Infant School often wish to move to the Junior School, **there is no automatic transfer**.

**Attendance at St Bede's Catholic Infant School does not guarantee your child a place at St Bede's Catholic Junior School.** The admissions criteria for St Bede's Catholic Junior School will be strictly followed – these are detailed on St Bede's Catholic Junior School's website [www.stbedesjuniorschool.co.uk](http://www.stbedesjuniorschool.co.uk) and in the Junior School's Prospectus, and a summarised version can be found on page 37 of this booklet.

Parents/carers of children in Year 2 in St Bede's Catholic Infant School **must** apply for a place for Year 3 to St Bede's Catholic Junior School by completing an **Infant to Junior Transfer Form 2021** and must do so during the primary application period (September 2020 to the 15<sup>th</sup> January 2021). This is available online from [www.halton.gov.uk/schooladmissions](http://www.halton.gov.uk/schooladmissions) and following the **Junior School Admissions** link. The local authority will also send an application form to the parents of all Year 2 children in attendance at St Bedes Catholic Infant School as of the end of September 2020, inviting them to apply for a place for their child. If your child joins St Bedes Catholic Infant School after this date you will need to get a form from the website or request one by emailing [schooladmissions@halton.gov.uk](mailto:schooladmissions@halton.gov.uk)

**Please note:** It is the responsibility of the parent/carer to make an application for their child. If you have not received the application form you must contact the local authority to request one.

The form **must be returned to the Local Authority by the closing date of 15<sup>th</sup> January 2021**. Any applications received after this closing date will only be considered if there are still places available after all the ones received on time have been accepted or declined, according to the admissions criteria.

## GENERAL INFORMATION

### Home to School Travel and Transport

In some circumstances children may be eligible to receive assistance with Home to School Transport. To see if your child is eligible please take a look at the Council's [Home to School Travel Policy online](#) by visiting [www.halton.gov.uk/schooladmissions](http://www.halton.gov.uk/schooladmissions) and following the link to **School Transport** or request a copy by calling 0151 5117444.

### Free School Meals

Information regarding the provision of School Lunches and Free School Meals is available on the Halton Borough Council website at [www.halton.gov.uk](http://www.halton.gov.uk), and alternatively on each school's website.

**Important Note:** All children in reception, year 1 and year 2 at Local Authority maintained schools, academies, free schools and alternative provision settings automatically get free school meals.

### School Uniform and Physical Education Kit

Head teachers, in consultation with school governors, decide whether or not there should be a school uniform. Details of uniform, where appropriate, are given in each school's prospectus, which can be obtained from the school. The LA is unable to assist parents with the cost of school uniform or physical education kit. All pupils are expected to conform to a reasonable standard of clothing, and parents are asked to try to ensure that pupils attend school suitably dressed.

For further information regarding School uniform, please visit the Department for Education's website [www.gov.uk/school-uniform](http://www.gov.uk/school-uniform).

### School Performance Tables

The latest performance tables for Schools are available via the Department for Education website at [www.education.gov.uk/schools/performance/index.html](http://www.education.gov.uk/schools/performance/index.html)

### Ofsted Reports

Ofsted reports for all schools these are available via Ofsted's website at [www.ofsted.gov.uk](http://www.ofsted.gov.uk)

### School Holiday Dates

The dates for all maintained schools in Halton for the Academic Year 2021-2022 will be published on the [Halton Borough Council website](#), or alternatively on each school's own website.

### Military Families

For families of service personnel with a confirmed posting to their area, or crown servants returning from overseas to live in that area, Halton Local Authority will be able to arrange a School place in advance of the relocation, if a preference form, along with an official letter from the MOD, FCO and GCHQ stating a relocation date, is submitted. Please contact the School Admissions Team on 0151 511 7338/7271 for further advice.

## Children and Young People with Special Educational Needs

If your child has an Education Health & Care Plan, or Special Educational Needs or Disability, you should discuss your child's requirements with the SEND Team on 0151 5117305 or by emailing [SENAT@halton.gov.uk](mailto:SENAT@halton.gov.uk) before submitting your application. Your child may also be entitled to assistance with Transport and to see if your child is eligible please take a look at the Council's [Home to School Travel Policy online](#) by visiting [www.halton.gov.uk/schooladmissions](http://www.halton.gov.uk/schooladmissions) and following the link to **School Transport**

## USEFUL CONTACTS

If you have any queries or wish to obtain further information regarding schools then you should contact the head teacher of your preferred school(s).

### Other useful contacts are as follows:

Admission to School	0151 511 7338/7271	<a href="mailto:schooladmissions@halton.gov.uk">schooladmissions@halton.gov.uk</a>
Free School Meals	0151 511 7188	<a href="mailto:school.meals@halton.gov.uk">school.meals@halton.gov.uk</a>
Special Educational Needs	0151 511 7305	<a href="mailto:SENAT@halton.gov.uk">SENAT@halton.gov.uk</a>
Education Welfare Service	0151 511 8231	

## Halton Direct Link Offices

### Widnes

- Brook Street, Widnes, WA8 6NB

### Runcorn

- Concourse Level, Halton Lea, Runcorn, WA7 2ES

## Neighbouring Local Authorities Contact Information

Authority	Contact Information
Cheshire East	0300 123 5012 <a href="mailto:admissions@cheshireeast.gov.uk">admissions@cheshireeast.gov.uk</a>
Cheshire West	0300 123 7039 <a href="mailto:admissions@cheshirewestandchester.gov.uk">admissions@cheshirewestandchester.gov.uk</a>
Knowsley	0151 443 3372 / 3373 / 5142 <a href="mailto:schooladmissions@knowsley.gov.uk">schooladmissions@knowsley.gov.uk</a>
Liverpool	0151 233 3006 <a href="mailto:admissions@liverpool.gov.uk">admissions@liverpool.gov.uk</a>
St Helens	01744 671 030 <a href="mailto:schooladmissions@sthelens.gov.uk">schooladmissions@sthelens.gov.uk</a>
Warrington	01925 446226 <a href="mailto:schooladmissions@warrington.gov.uk">schooladmissions@warrington.gov.uk</a>